

Marijuana and Public Safety in Colorado

JACK K. REED

COLORADO DEPARTMENT OF PUBLIC SAFETY

DIVISION OF CRIMINAL JUSTICE

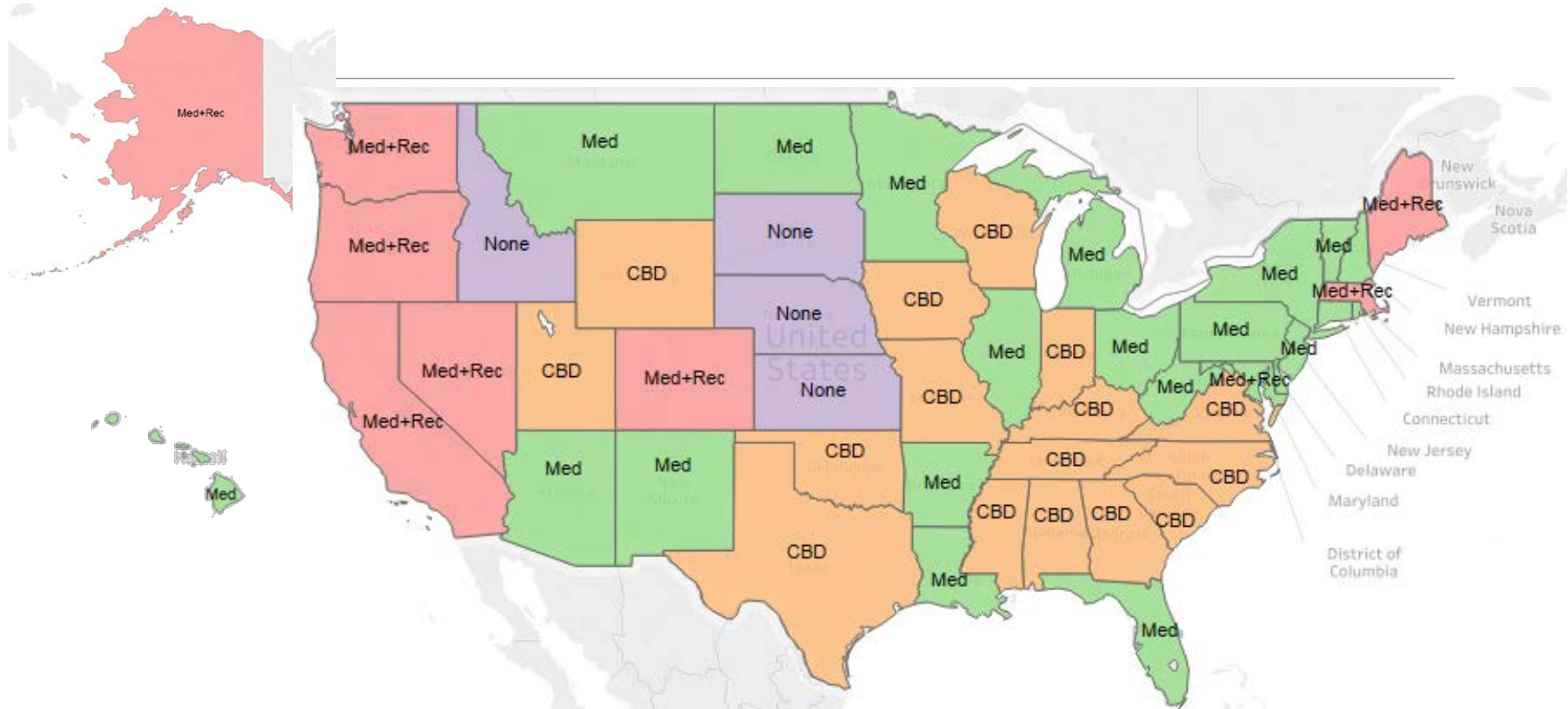
OFFICE OF RESEARCH & STATISTICS

NOVEMBER 2017





National Landscape of Marijuana Laws



Medical & Recreational: 8 States & DC --- **Medical only: 22 States** --- **CBD only: 16 States** --- **None: 4 States**

Source: National Conference of State Legislatures (2017), <http://www.ncsl.org/research/health/state-medical-marijuana-laws.aspx>

Note: Not all states' laws are currently in effect.

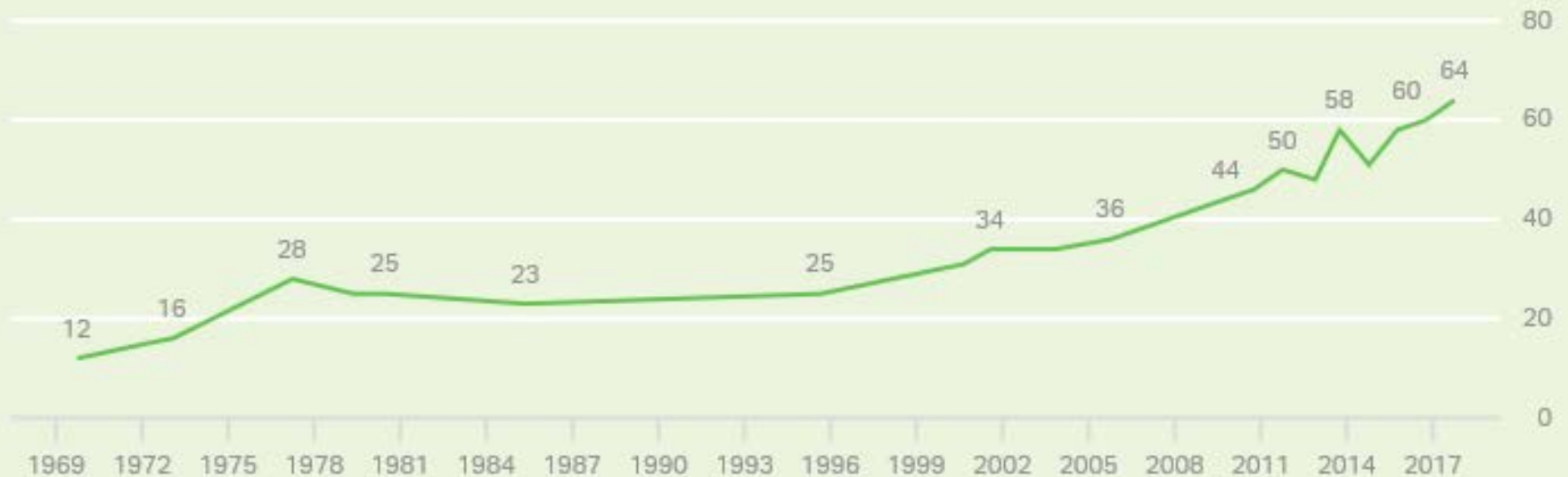


National Opinion on Legalizing Marijuana

Americans' Support for Legalizing Marijuana Continues to Rise

Do you think the use of marijuana should be made legal, or not?

■ % Yes, legal



GALLUP



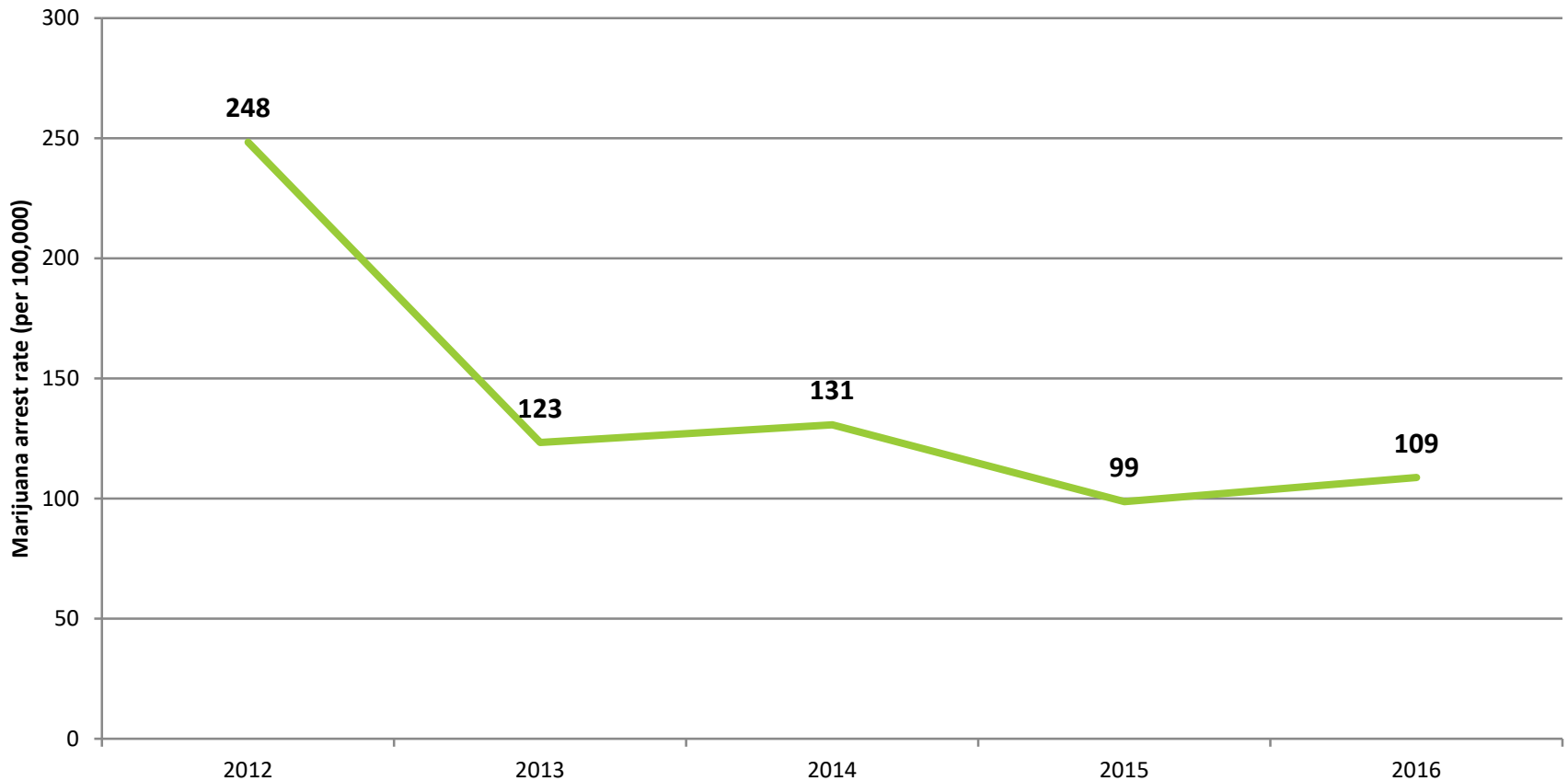
Changes to Colorado's Legal Landscape

- “Gray” and black market grows increasingly problematic
- Law limiting grows on residential property (HB 17-1220)
 - 12 plants per residential property
 - 24 plants for a caregiver
 - Penalties range from drug petty offense (1st offense & >12 plants) up to DF3 (2nd or subsequent offense with >24 plants)
- Established \$6 million fund to reimburse law enforcement and district attorneys for enforcement of marijuana laws (HB 17-1221)
- New edible product rules
 - Required marking to indicate THC
 - None shaped like candy, fruit, people, animals



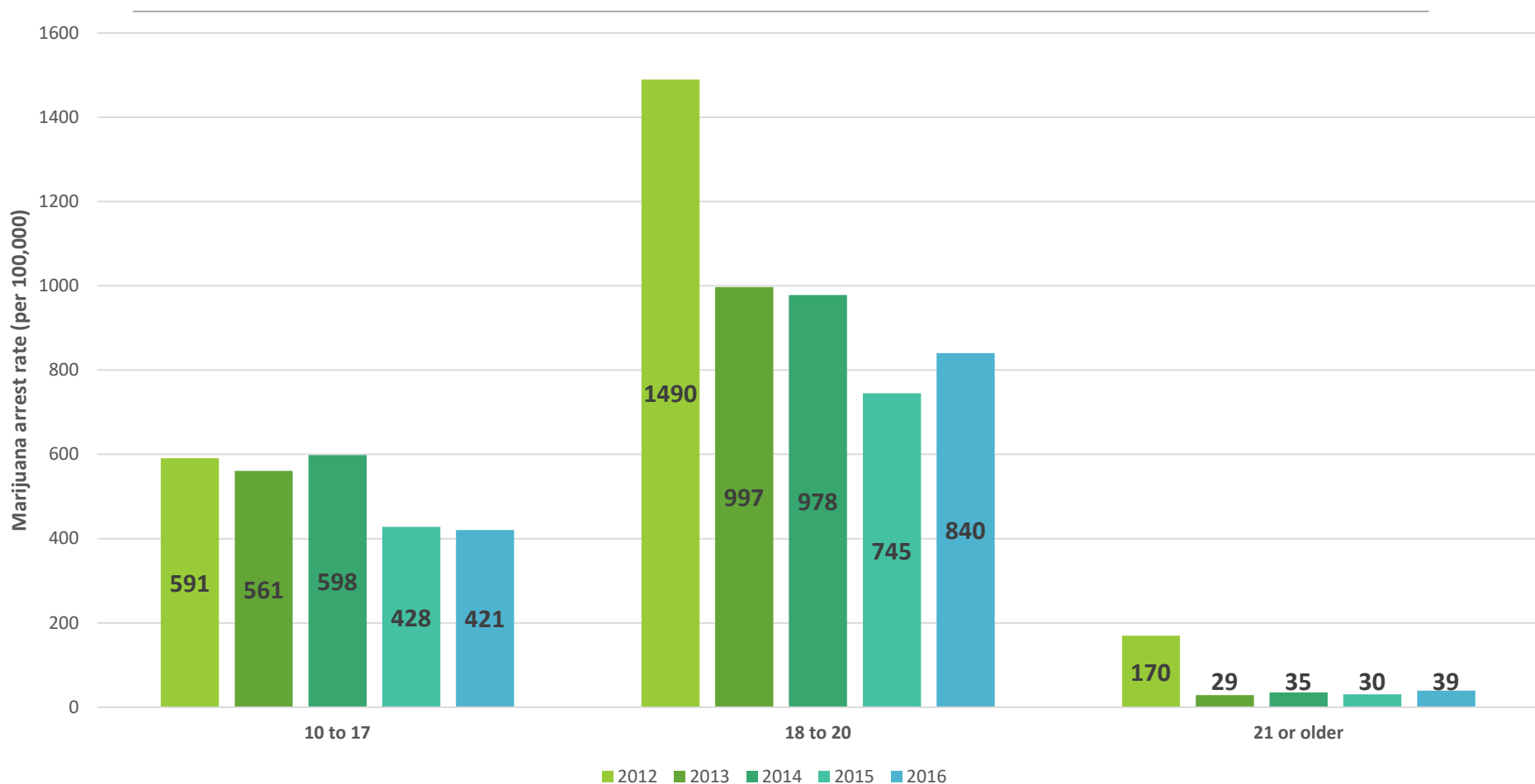


Marijuana Arrest Rates



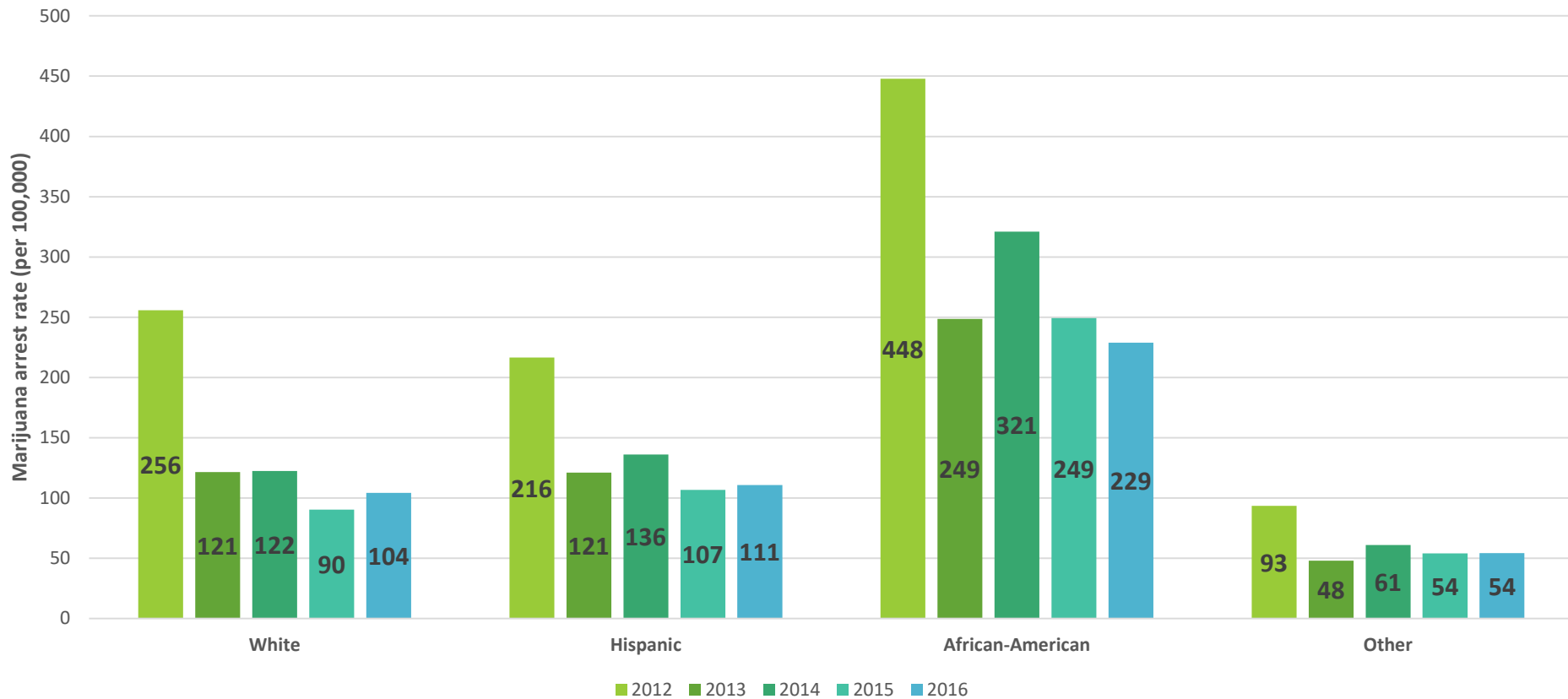


Marijuana Arrest Rates, by age group



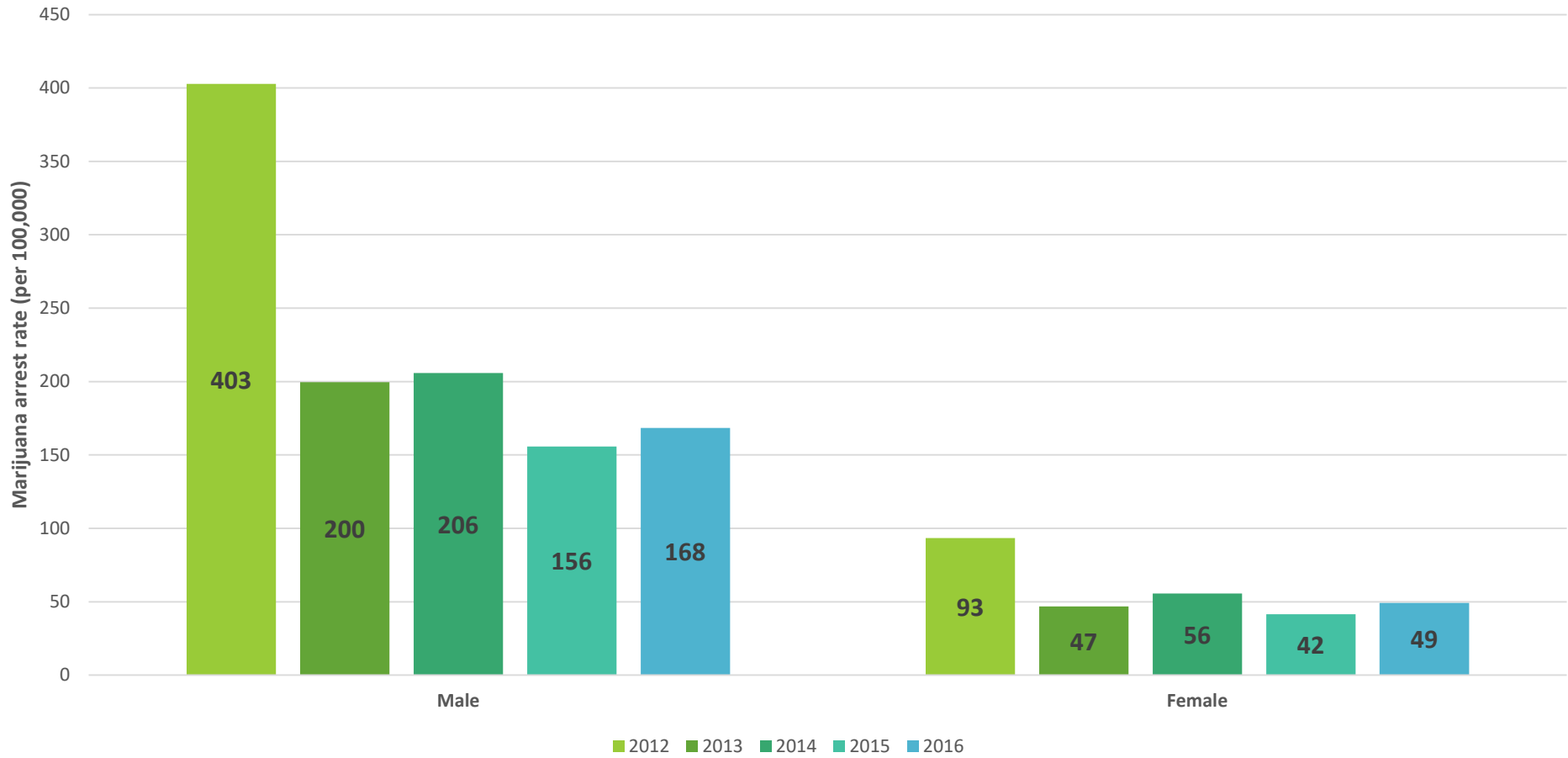


Marijuana Arrest Rates, by race





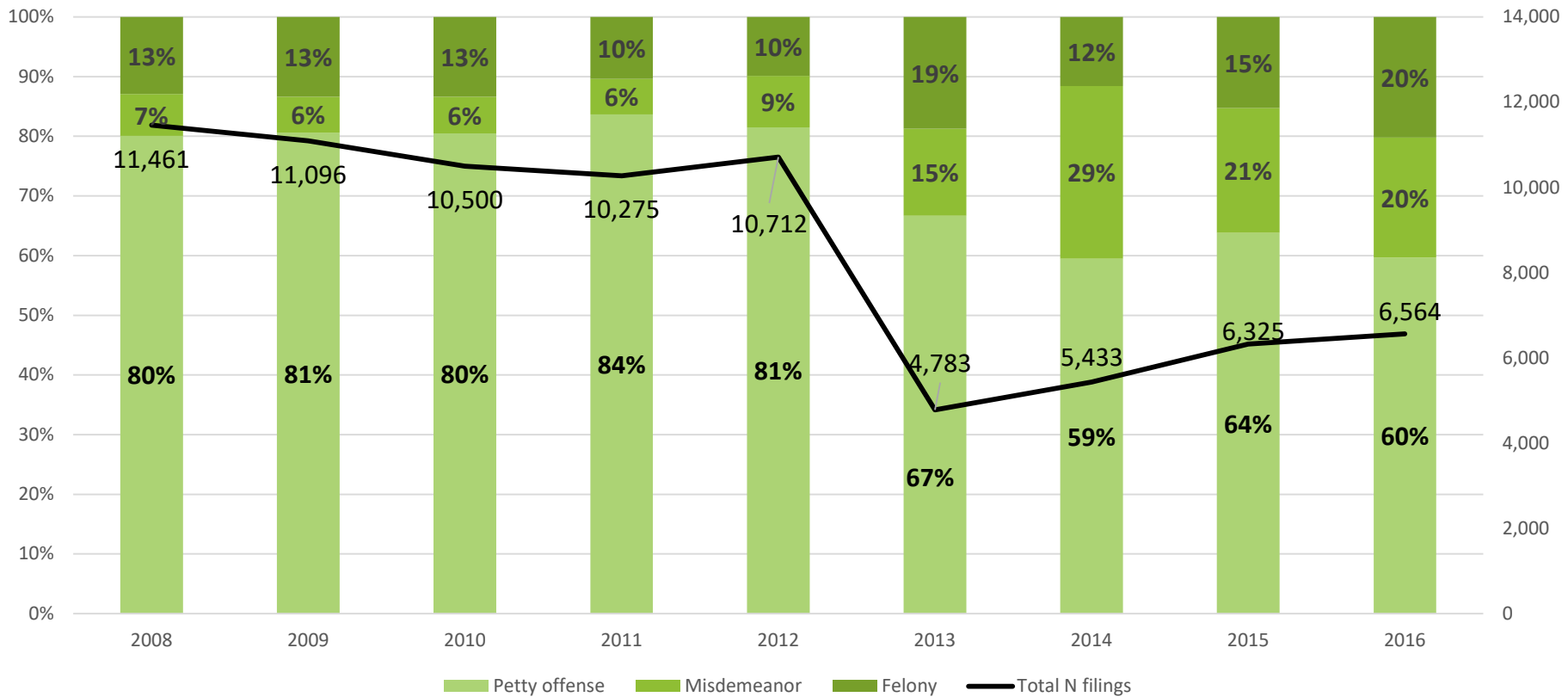
Marijuana Arrest Rates, by gender





Marijuana Filings

Marijuana Filings in District and County Court

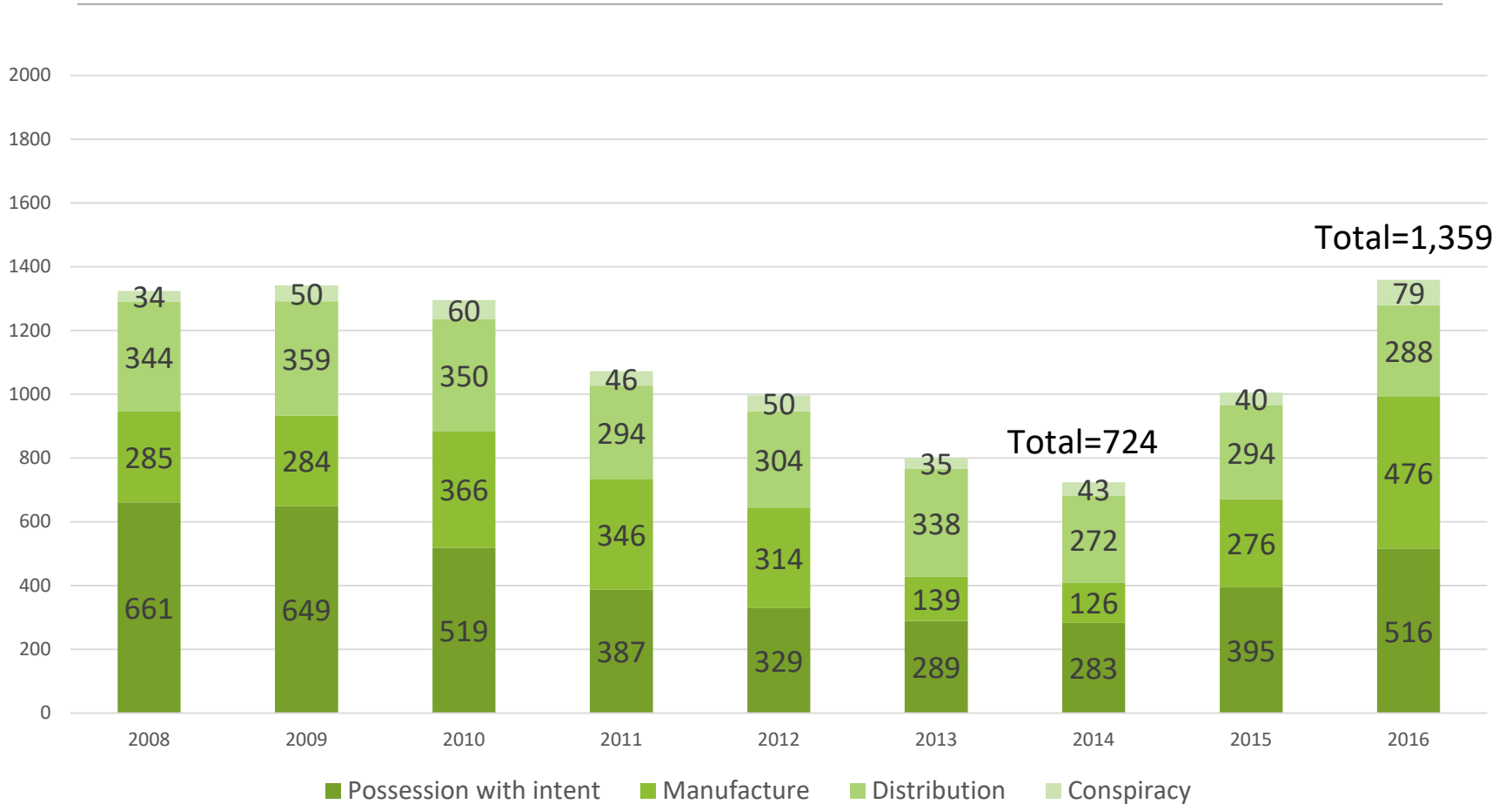


Source: Colorado State Judicial Branch.

Note: County court data does not include Denver County.



Marijuana Filings for Serious Drug Crime Types

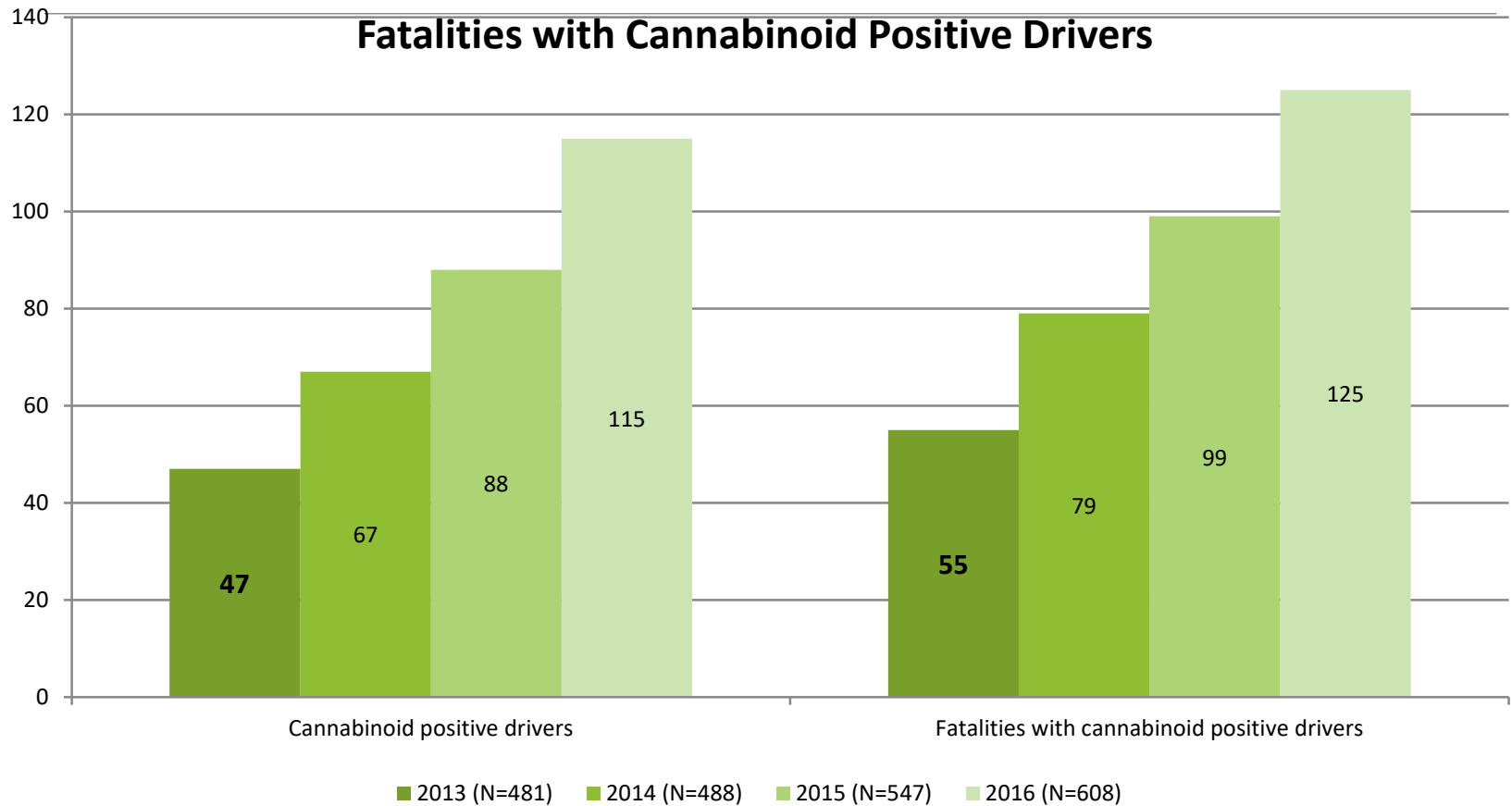


Source: Colorado State Judicial Branch.

Note: County court data does not include Denver County.



Fatalities on Colorado Roadways



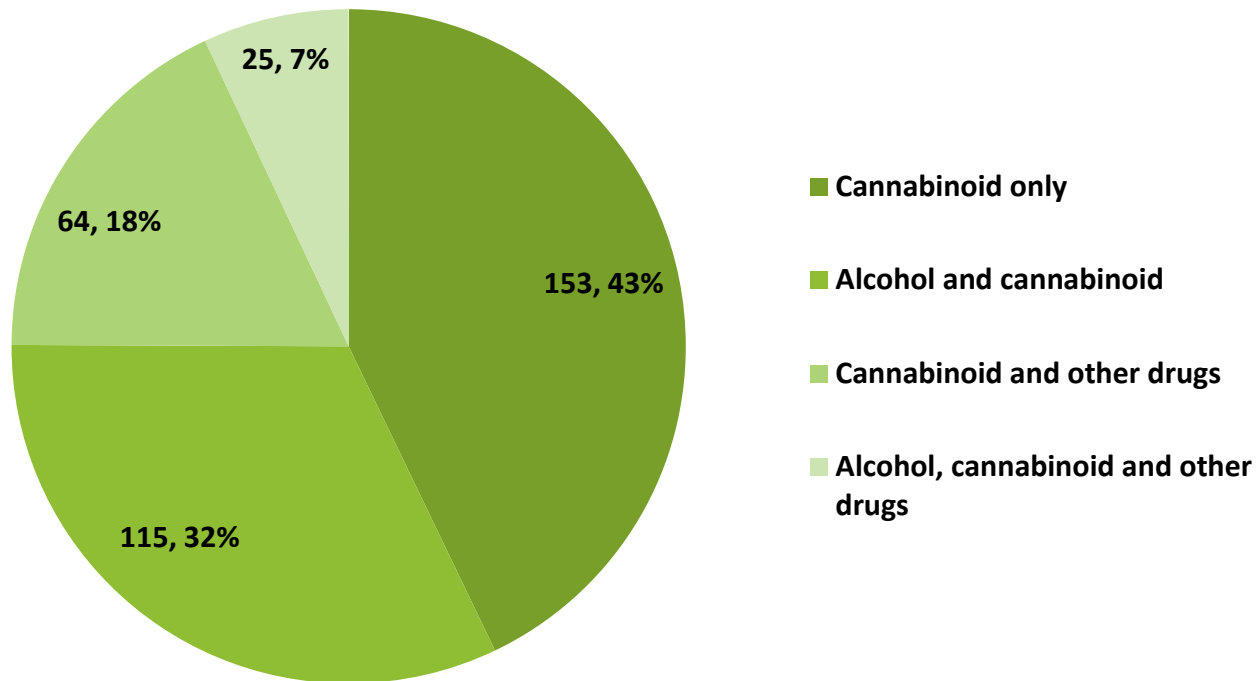
2016 DATA ARE PRELIMINARY AND SUBJECT TO CHANGE

Note: A positive test for cannabinoids may be the result of active THC or one of its inactive metabolites and does not necessarily indicate impairment.
Source: Data provided by Colorado Department of Transportation, 6/27/2017.



Fatalities on Colorado Roadways, 2013-16

2013-16 Fatalities with Cannabinoid



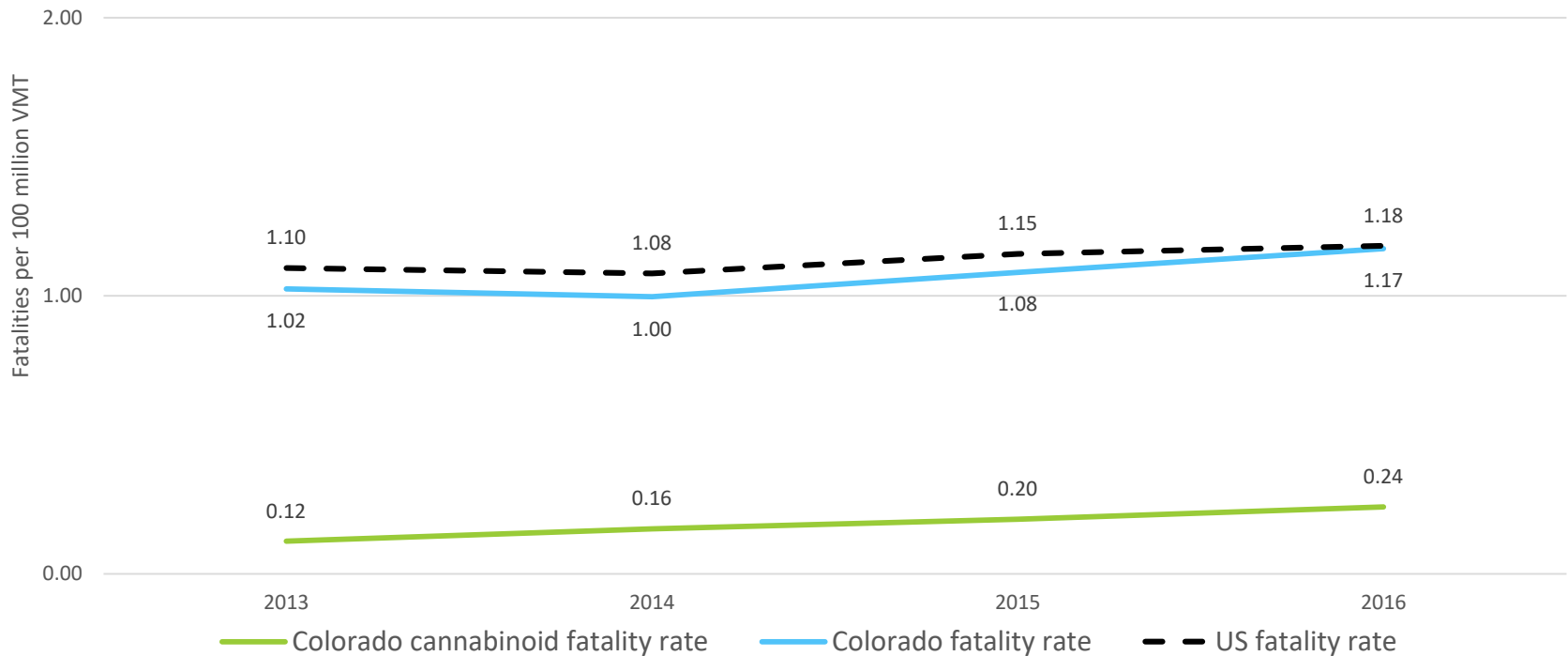
2016 DATA ARE PRELIMINARY AND SUBJECT TO CHANGE

Note: In the period from 2013-2016 there were 357 fatalities where the driver tested positive for a cannabinoid and 2,123 fatalities overall. A positive test for cannabinoids may be the result of active THC or one of its inactive metabolites and does not necessarily indicate impairment.

Source: Data provided by Colorado Department of Transportation, 9/22/2017.



Fatality rates on Colorado & US Roadways, 2013-16

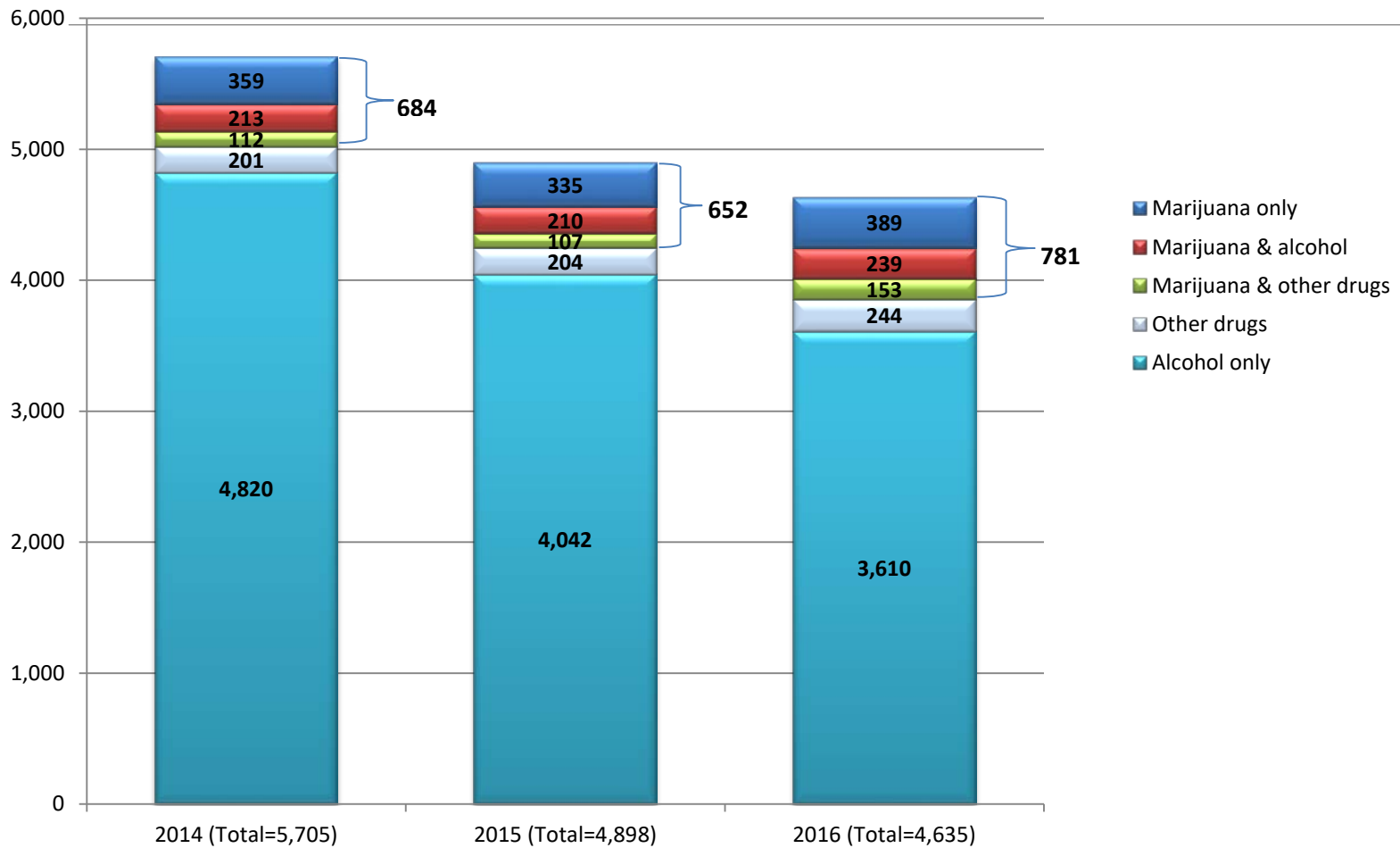


2016 DATA ARE PRELIMINARY AND SUBJECT TO CHANGE

Note: A positive test for cannabinoids may be the result of active THC or one of its inactive metabolites and does not necessarily indicate impairment.
Source: Data provided by Colorado Department of Transportation, 9/22/2017; National Highway Transportation Safety Administration, 2016 Quick Facts; 2015 Quick Facts..



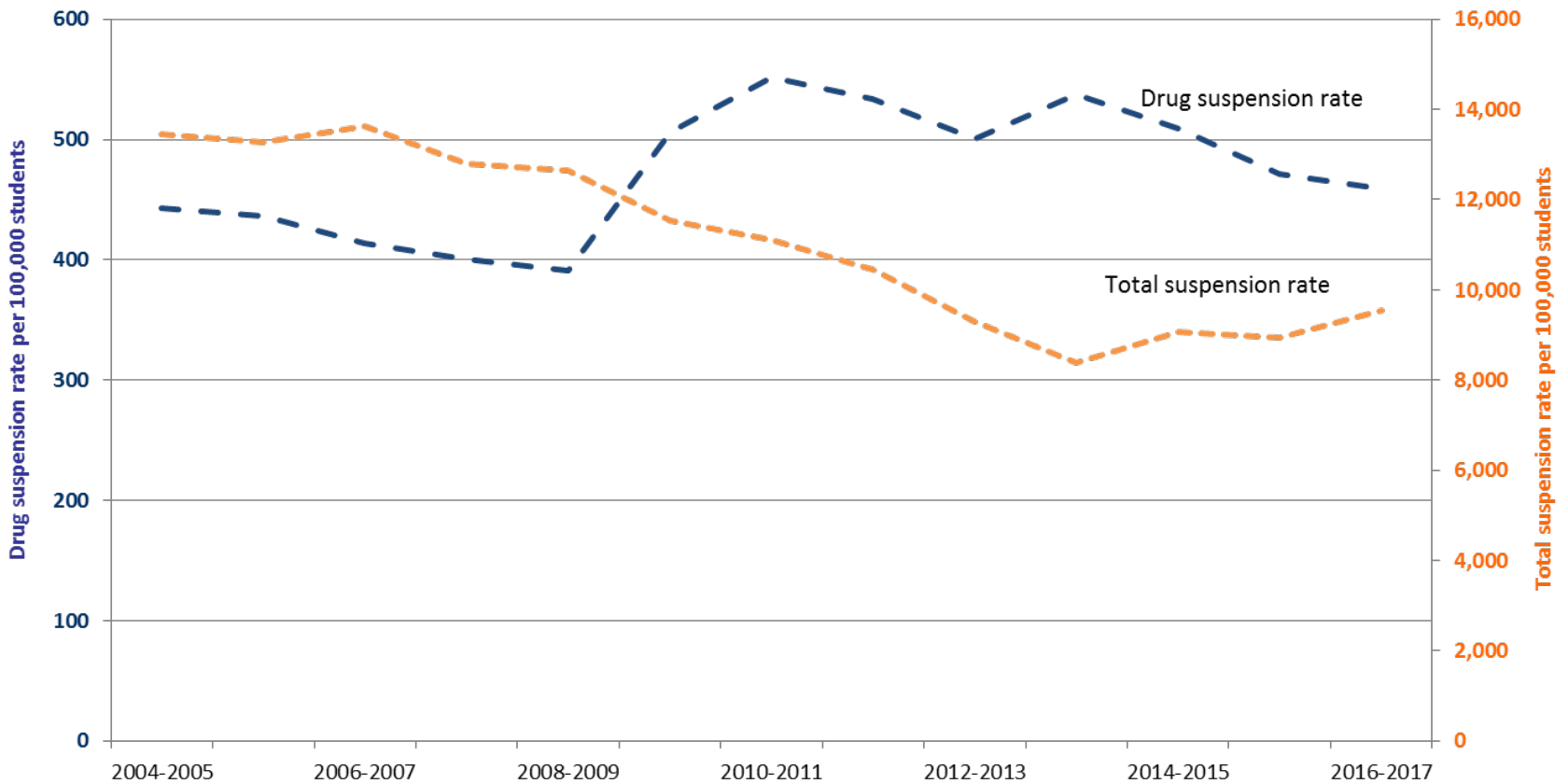
DUI Citations Colorado State Patrol





School Suspension Rate

Total and drug suspension rate, per 100,000 students



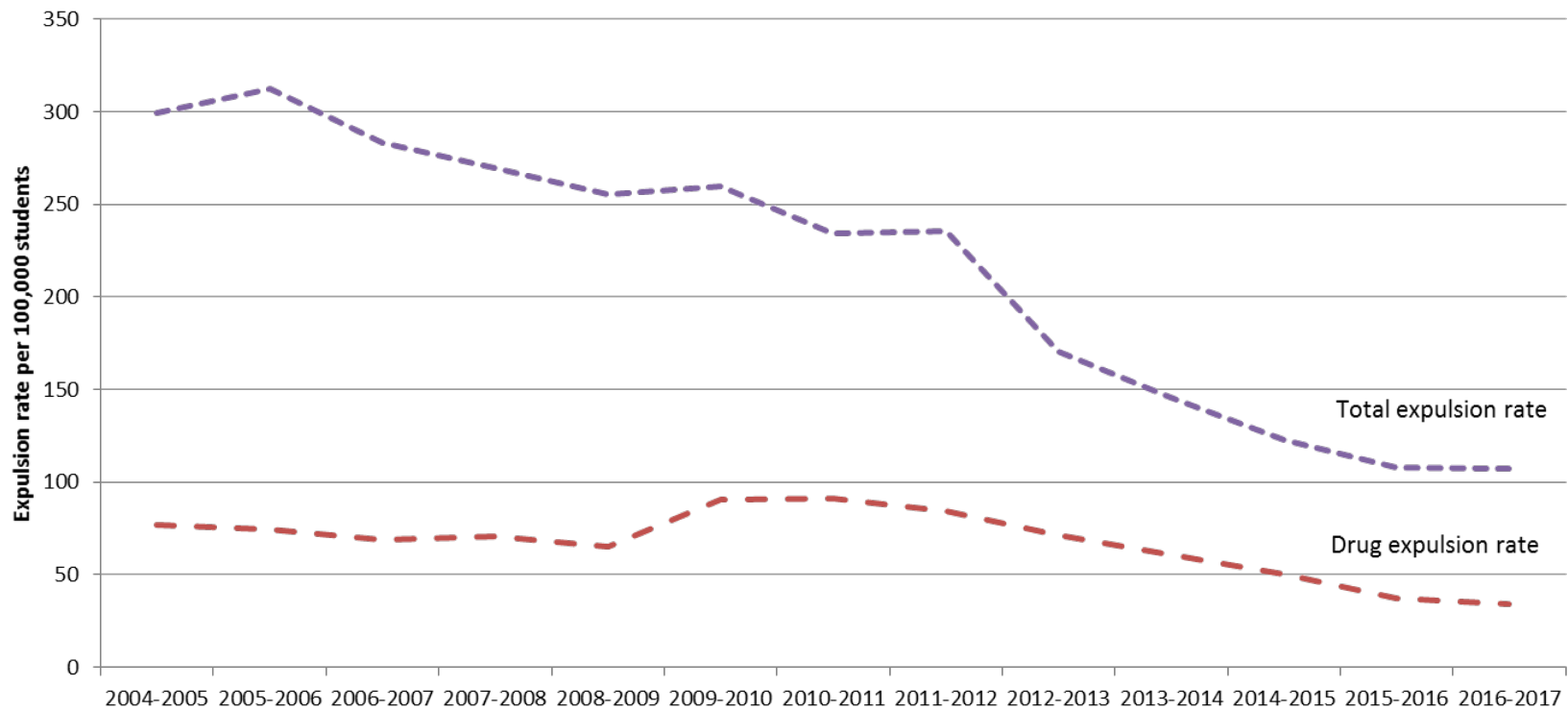
Source: Colorado Department of Education (2017).

Note: The 2016-17 school year was the first complete year where marijuana was reported separately from other drugs.



School Expulsion Rate

Total and drug expulsion rate, per 100,000 students

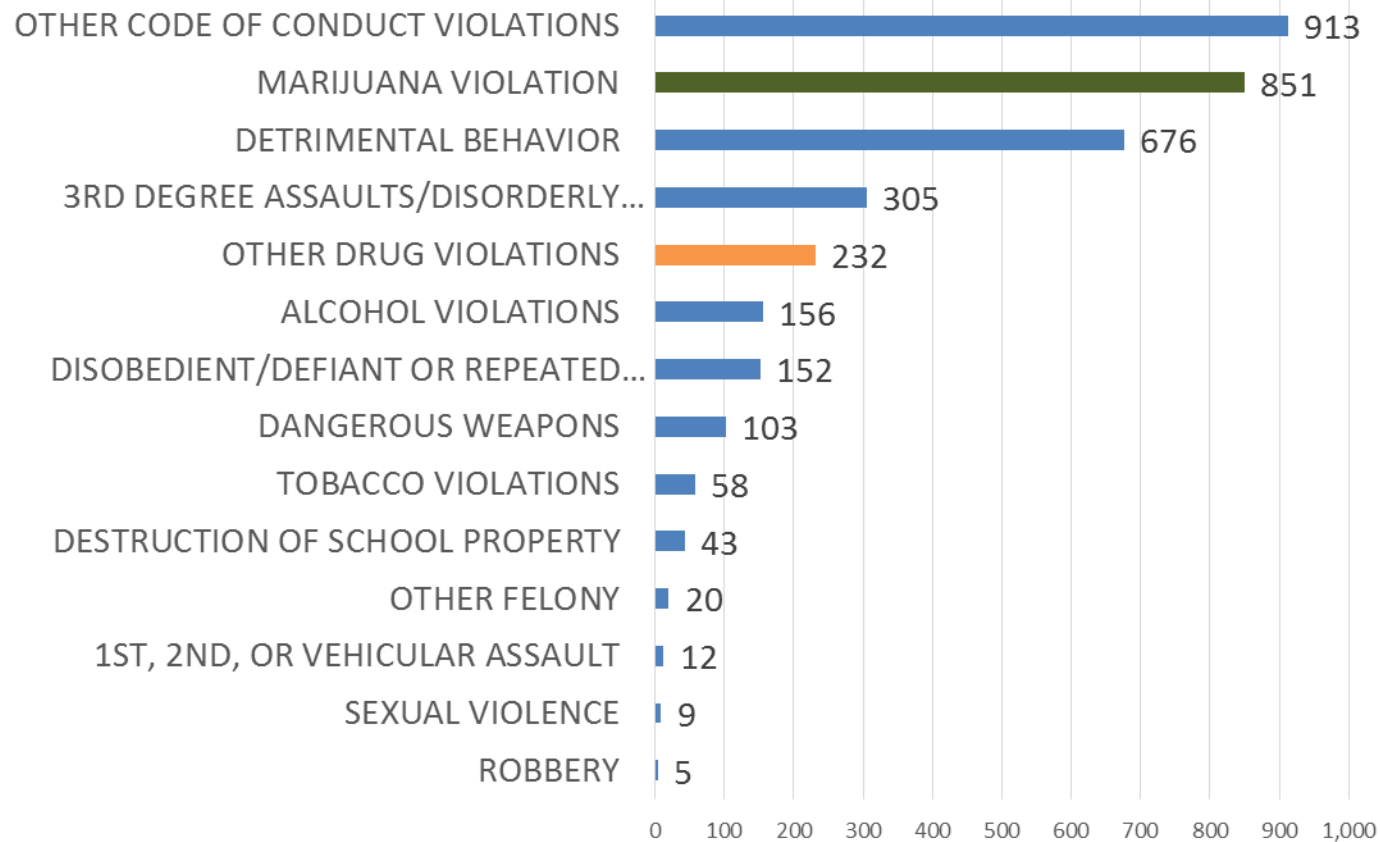


Source: Colorado Department of Education (2017).

Note: The 2016-17 school year was the first complete year where marijuana was reported separately from other drugs.



Law Enforcement Referrals in Public Schools, 2016-17



Source: Colorado Department of Education (2017).

Note: The 2016-17 school year was the first complete year where marijuana was reported separately from other drugs.



School Discipline for Marijuana 2016-17

3,147 suspensions for marijuana

- 348 marijuana suspensions per 100,000 pupils
- 4% of total suspensions
- 76% of drug suspensions

211 expulsions for marijuana

- 23 marijuana expulsions per 100,000 pupils
- 22% of total expulsions
- 68% of drug expulsions

851 law enforcement (LE) referrals for marijuana

- 94 marijuana LE referrals per 100,000 pupils
- 24% of total LE referrals
- 79% of drug LE referrals



Contact Information

Jack K. Reed

Colorado Division of Criminal Justice

700 Kipling St., Suite 1000

Lakewood, CO 80215

Jack.Reed@state.co.us

303-239-4330