

Substance Impacts in Colorado



JACK K. REED
COLORADO DEPARTMENT OF PUBLIC SAFETY,
DIVISION OF CRIMINAL JUSTICE,
OFFICE OF RESEARCH & STATISTICS
AUGUST 2016



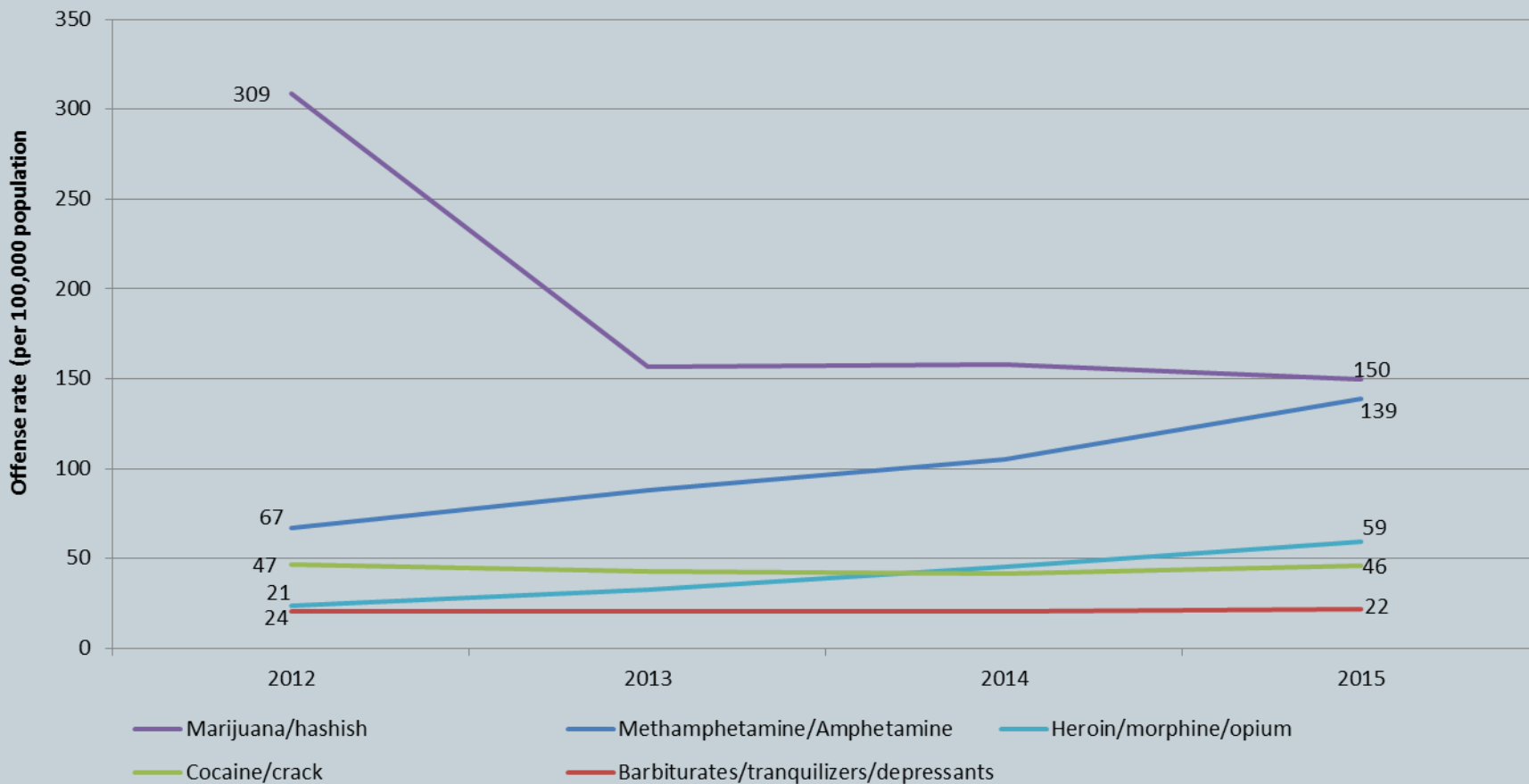


Public Safety





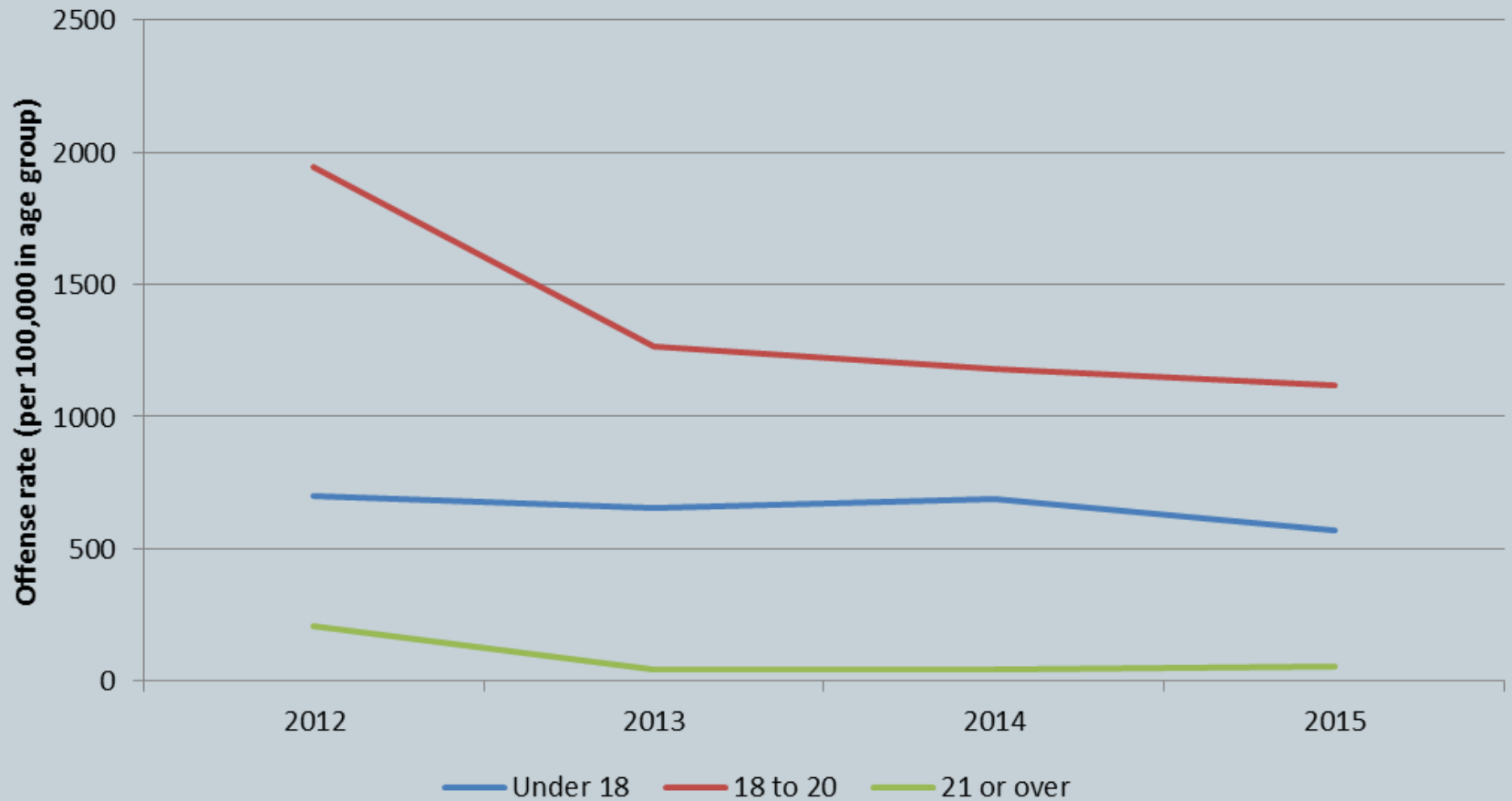
Offense Rate



Source: Colorado Bureau of Investigation, National Incident-Based Reporting System data.



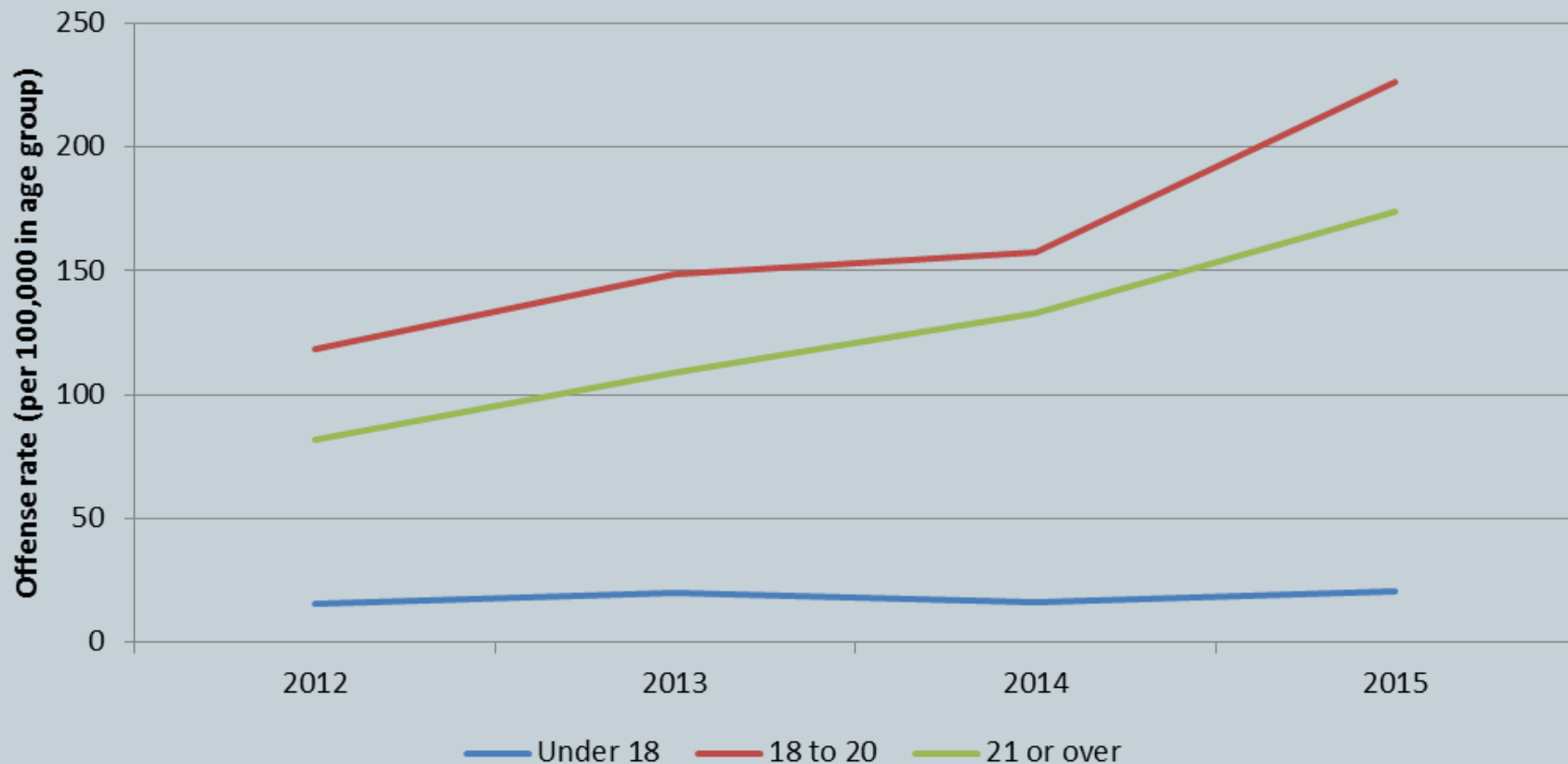
Marijuana Offense Rate by Age Group



Source: Colorado Bureau of Investigation, National Incident-Based Reporting System data.



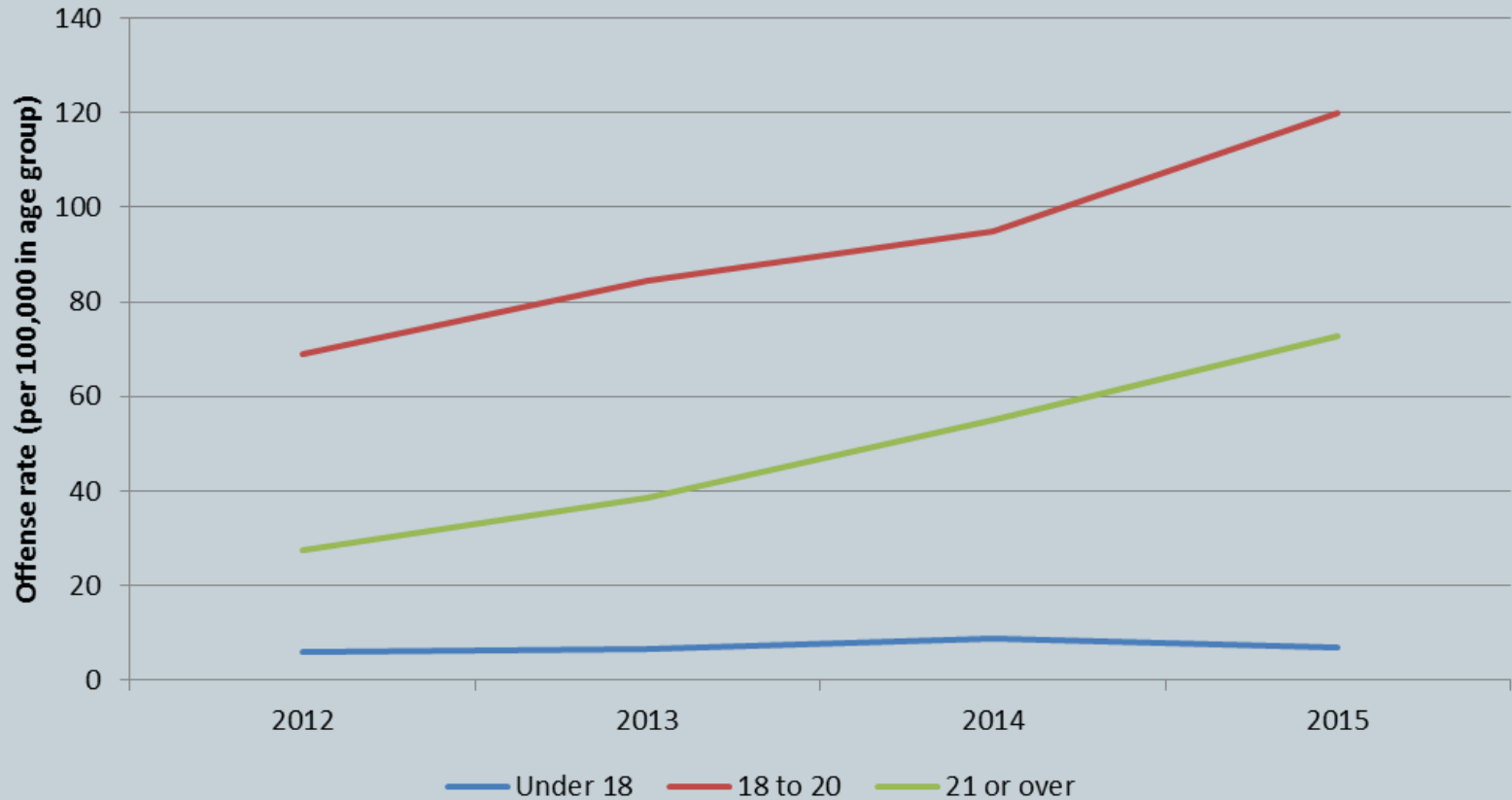
Methamphetamine/Amphetamine Offense Rate, by Age Group



Source: Colorado Bureau of Investigation, National Incident-Based Reporting System data.



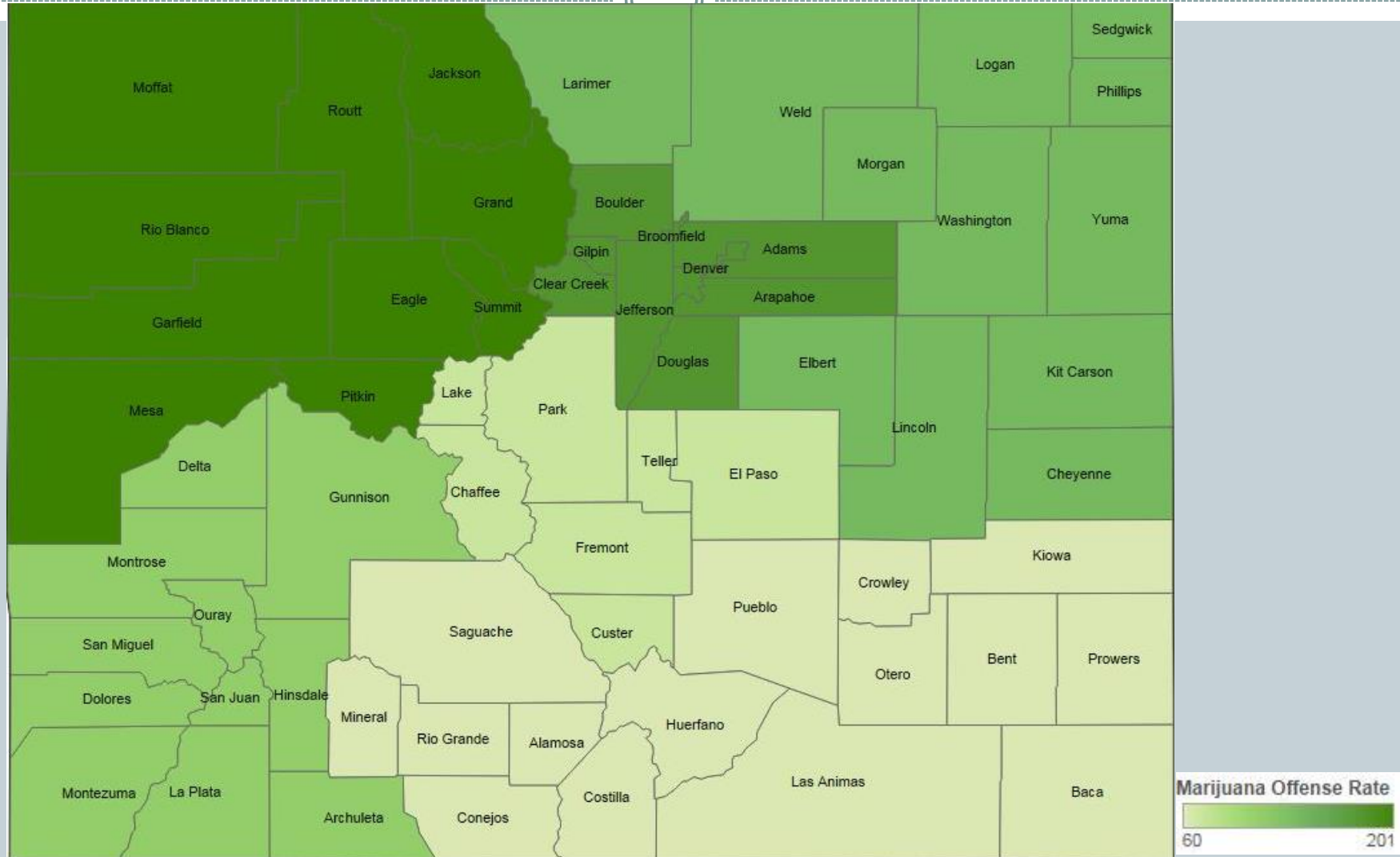
Heroin Offense Rate, by Age Group



Source: Colorado Bureau of Investigation, National Incident-Based Reporting System data.



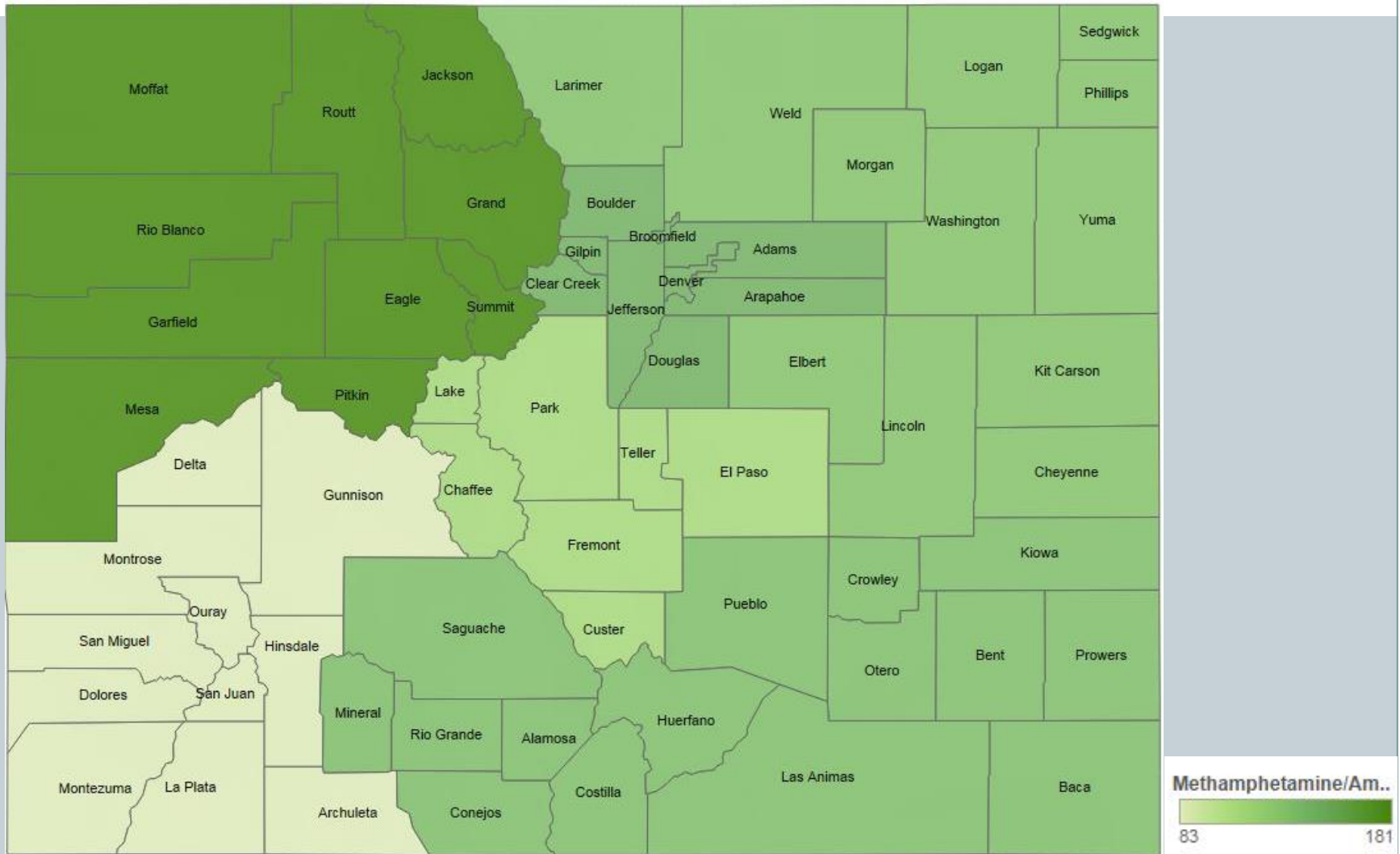
Marijuana Offense Rate (2015)



Source: Colorado Bureau of Investigation, National Incident-Based Reporting System data.



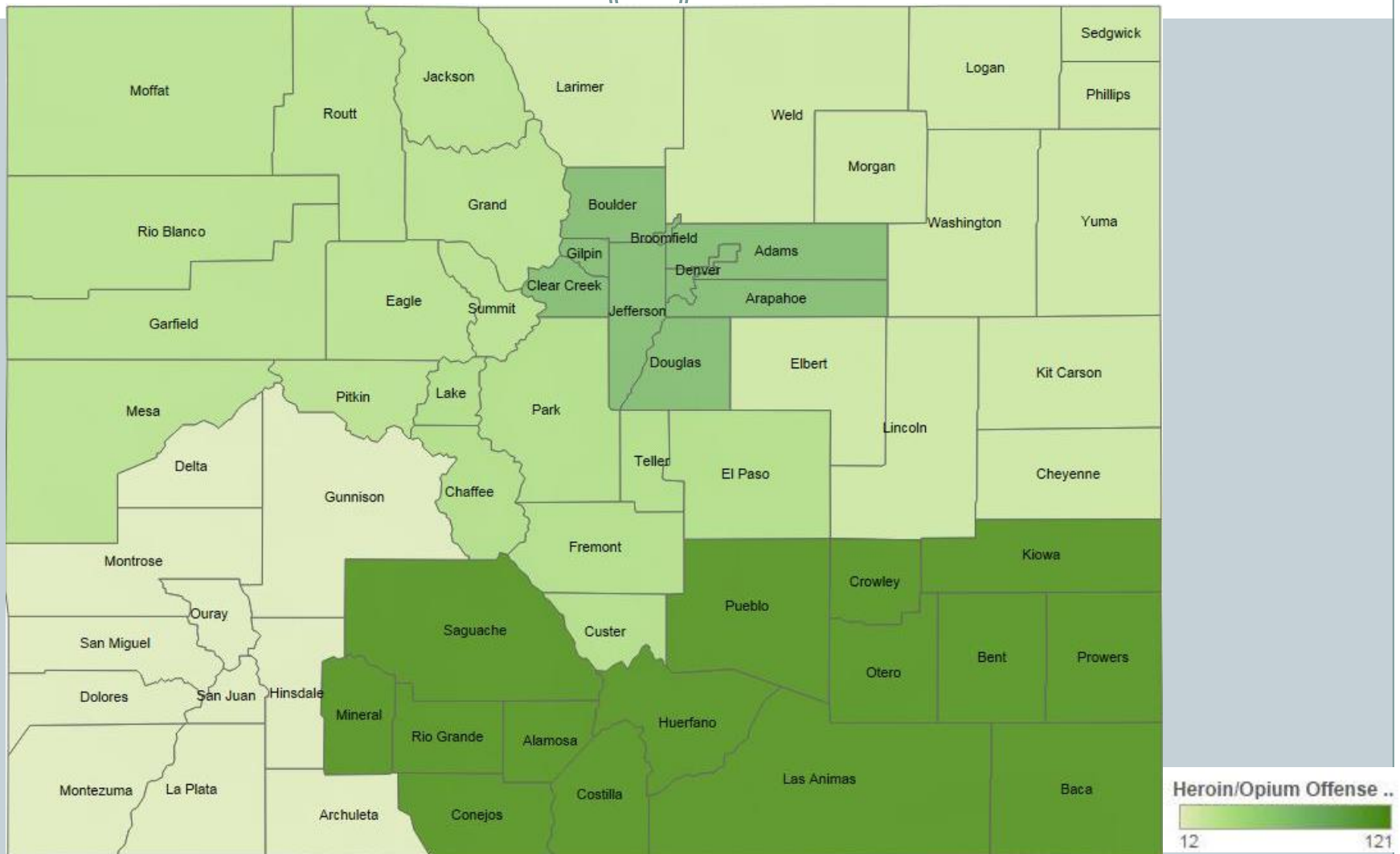
Methamphetamine Offense Rate (2015)



Source: Colorado Bureau of Investigation, National Incident-Based Reporting System data.



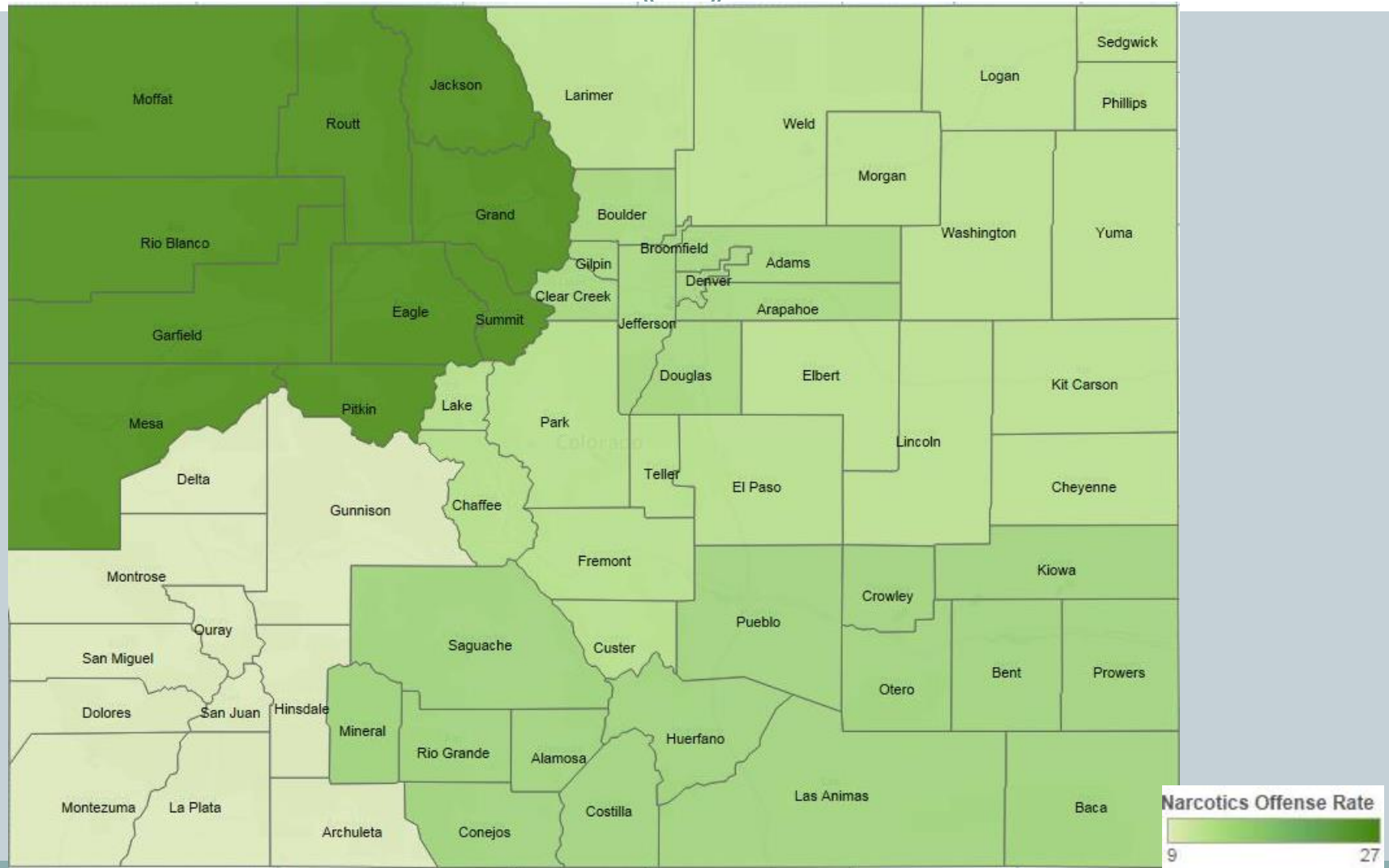
Heroin/Opium Offense Rate, 2015



Source: Colorado Bureau of Investigation, National Incident-Based Reporting System data.



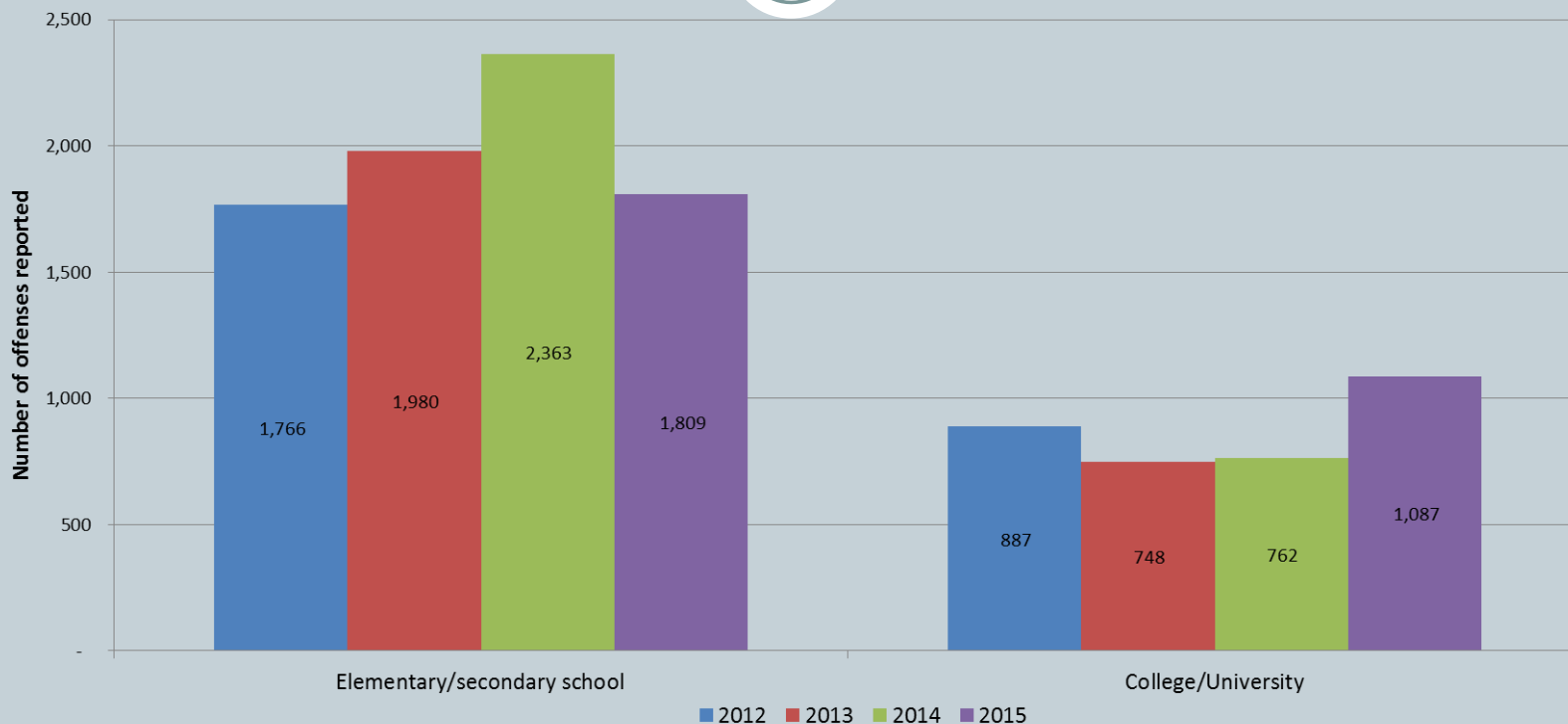
Narcotics Offense Rate, 2015



Source: Colorado Bureau of Investigation, National Incident-Based Reporting System data.



Marijuana Offenses by Location



Source: Colorado Bureau of Investigation, National Incident-Based Reporting System database.

Note: "Elementary/secondary school" means that the offense occurred within an elementary or secondary school.

"College/University" means that the offense occurred within a college or university. In 2012 there were 43 offenses where the type of school could not be determined.

Source: Colorado Bureau of Investigation, National Incident-Based Reporting System data.

Note: In 2012 there were 43 cases where the type of school could not be determined.



Marijuana Enforcement Pueblo County

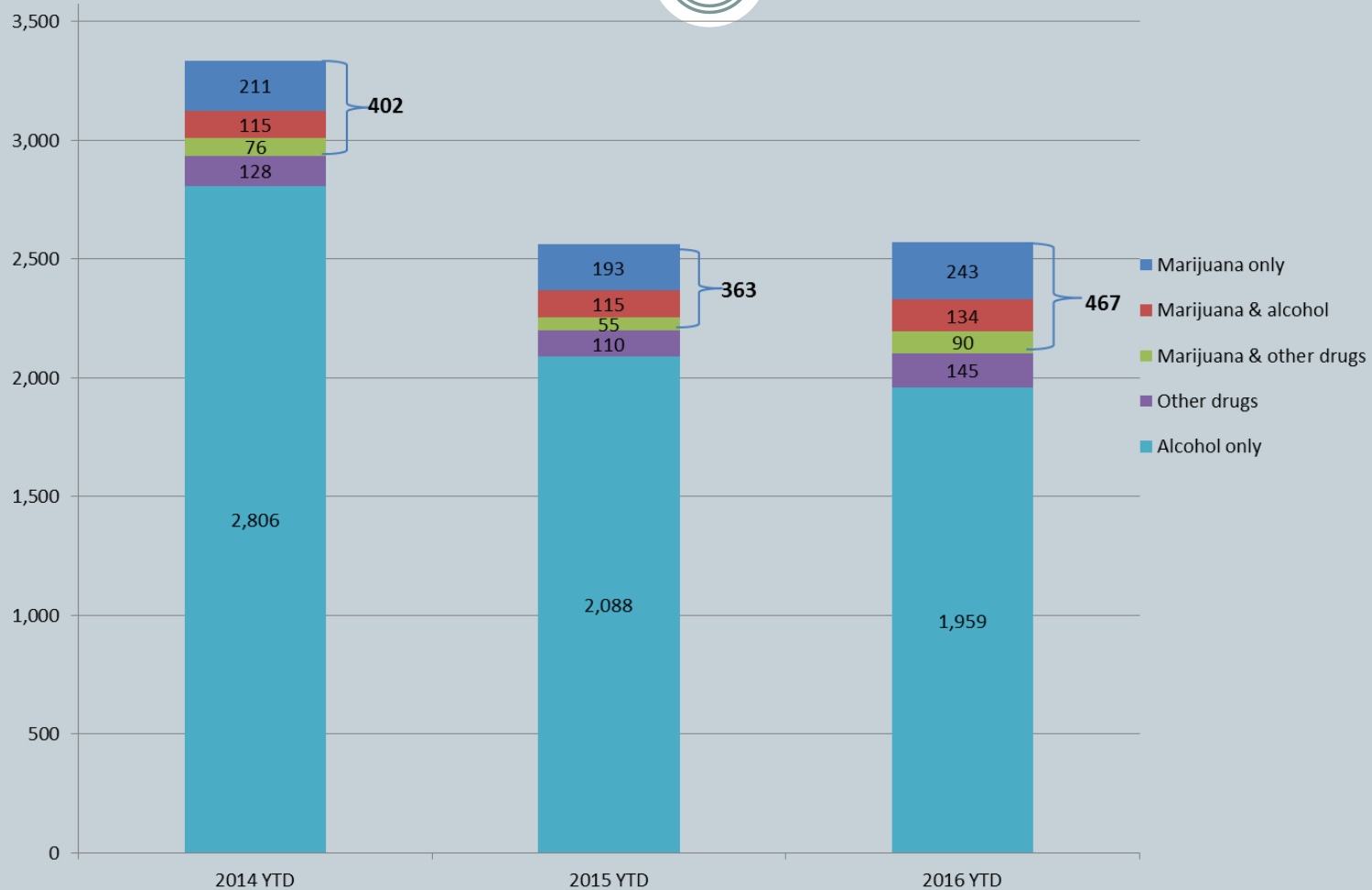


- **Pueblo County Sheriff's Office-2016 YTD**
 - 39 arrests in 27 homes
 - Over 5000 plants & 100 pounds of dried product seized
 - 6 BHO labs
 - 26 weapons, including an illegally altered assault rifle



Driving Under the Influence

Colorado State Patrol



Note: Citation type is classified according to the trooper's impressions of the reason for impairment. Source: Data provided by Colorado State Patrol, 8/4/2016.



Driving Choices



High school
students
drove after
using:

- Marijuana—11%
- Alcohol—8%

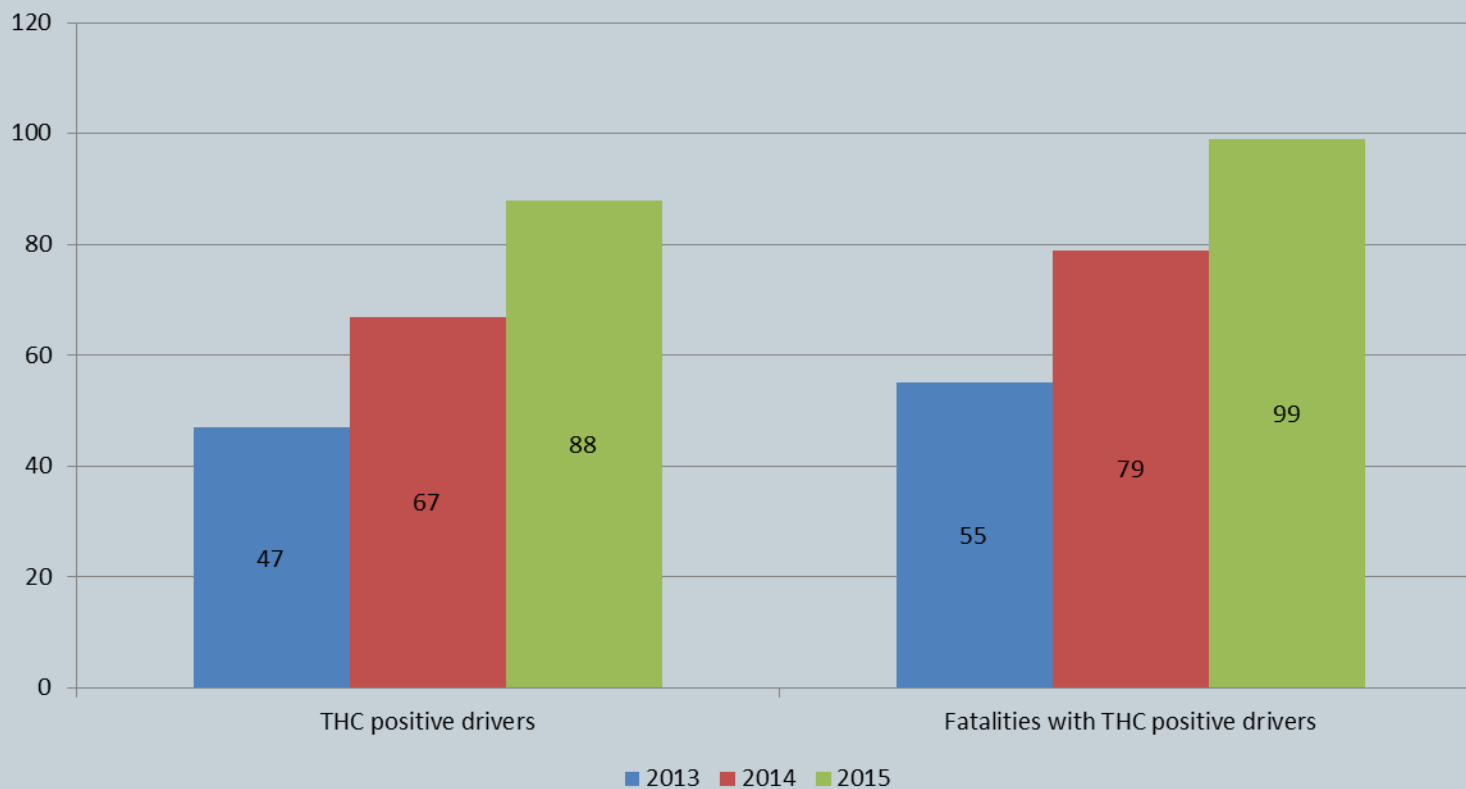
Adults
drove after
using:

- Marijuana—9%
- Alcohol—28%
- Prescription drugs—6%



Traffic Fatalities

16



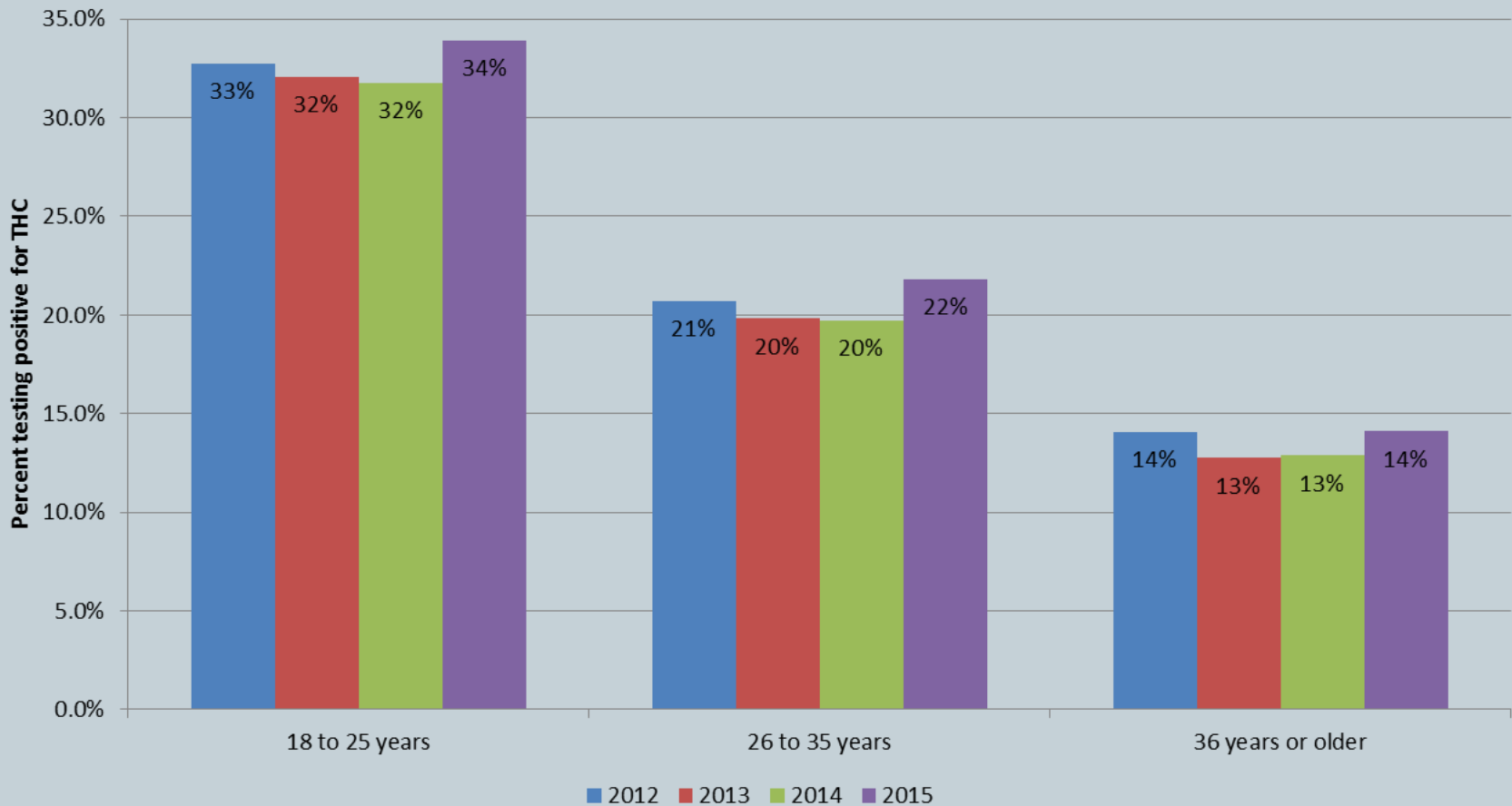
Source: Colorado Department of Transportation, Fatality Analysis Reporting System (FARS) data.

Note: Presence of THC does not necessarily indicate impairment because it may be for metabolites that stay in the system long after use. A driver can test positive for both THC and alcohol and those fatalities would be included in both of these totals.

DATA FOR 2015 ARE PRELIMINARY AND SUBJECT TO CHANGE



Adult Probationer THC Test Results



Source: Data provided by Colorado State Judicial Department.



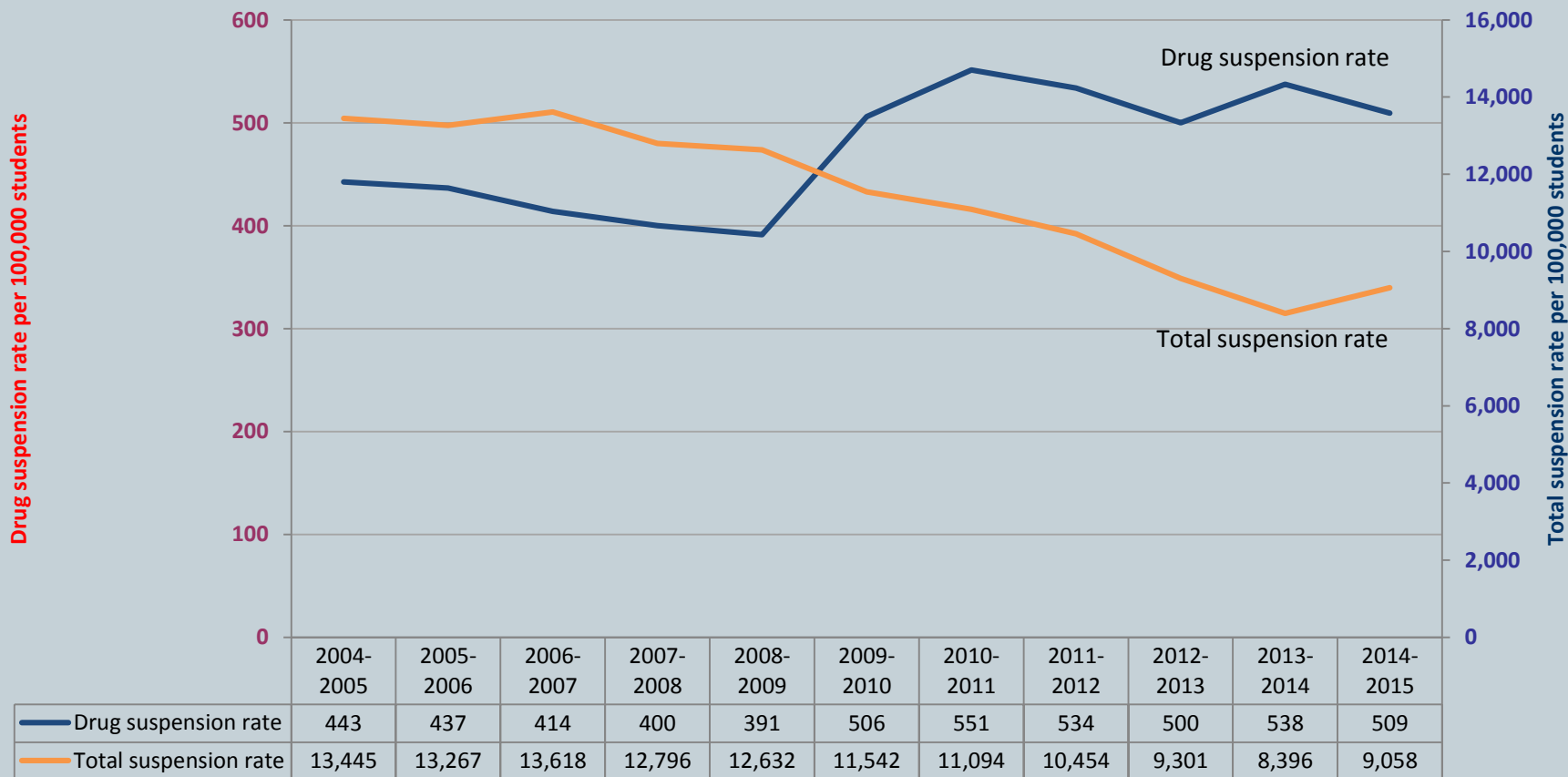
Youth Access in Colorado





School Discipline

Total and drug suspension rate, per 100,000 students

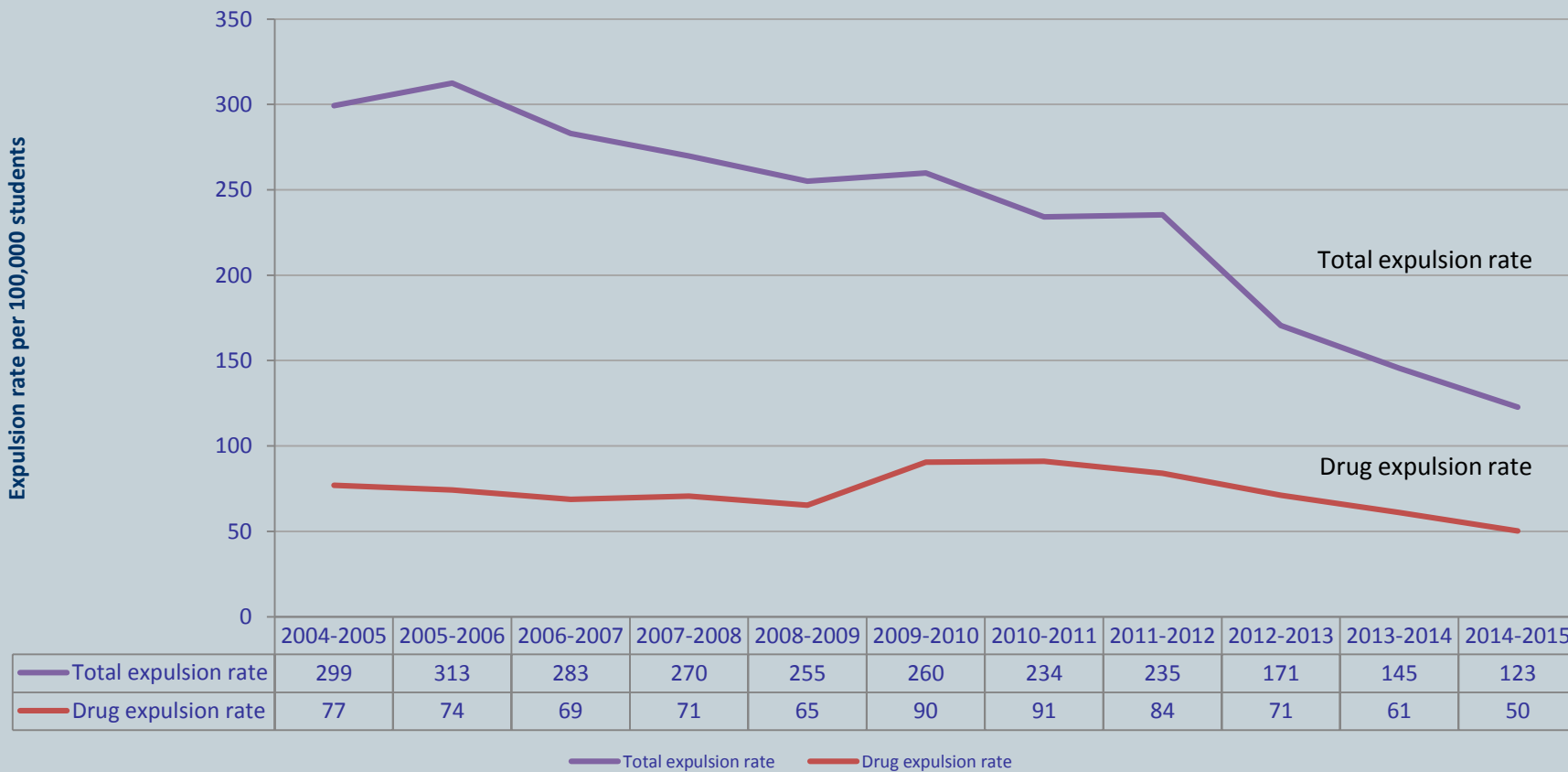


Source: Colorado Department of Education.



School Discipline

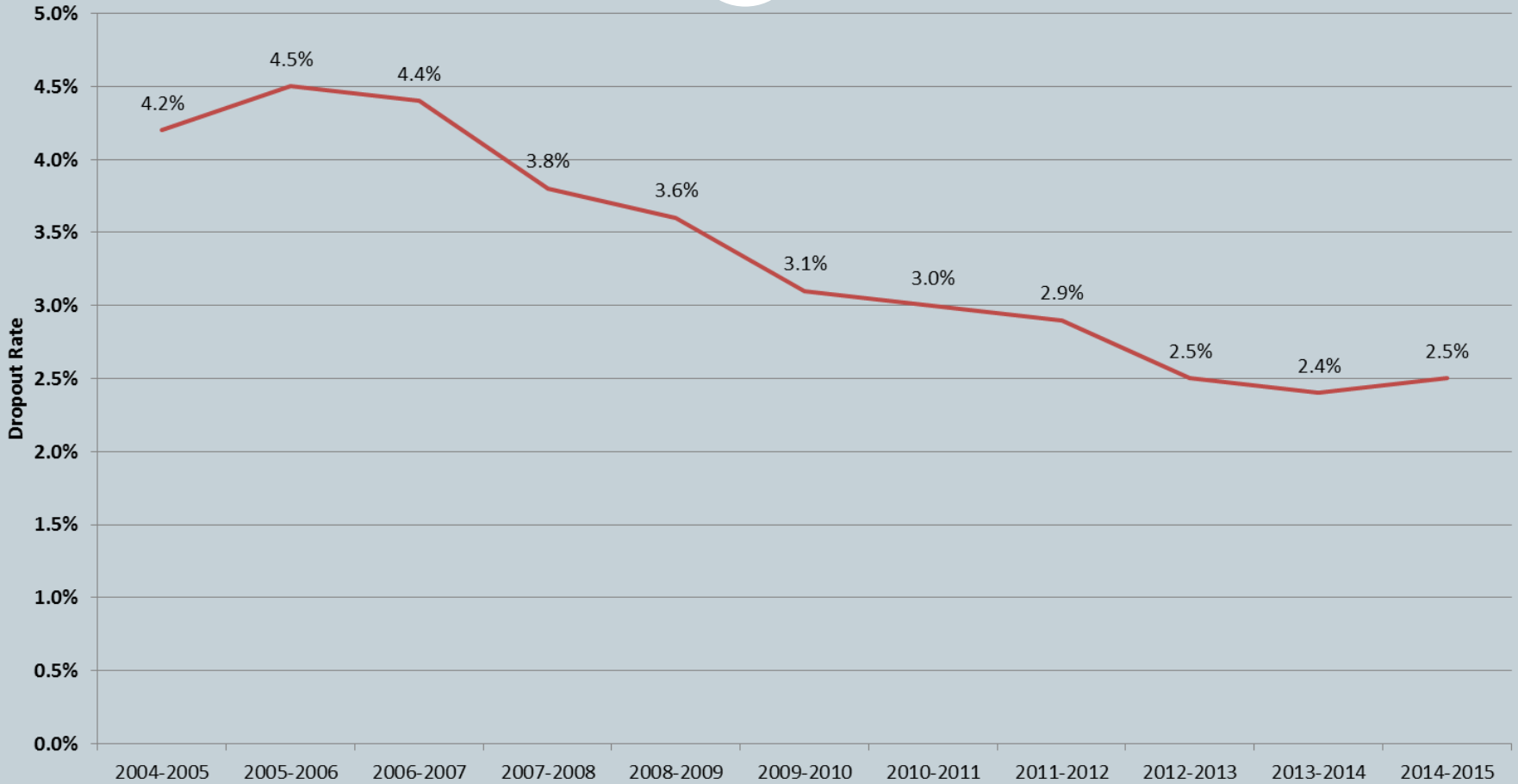
Total and drug expulsion rate, per 100,000 students



Source: Colorado Department of Education.



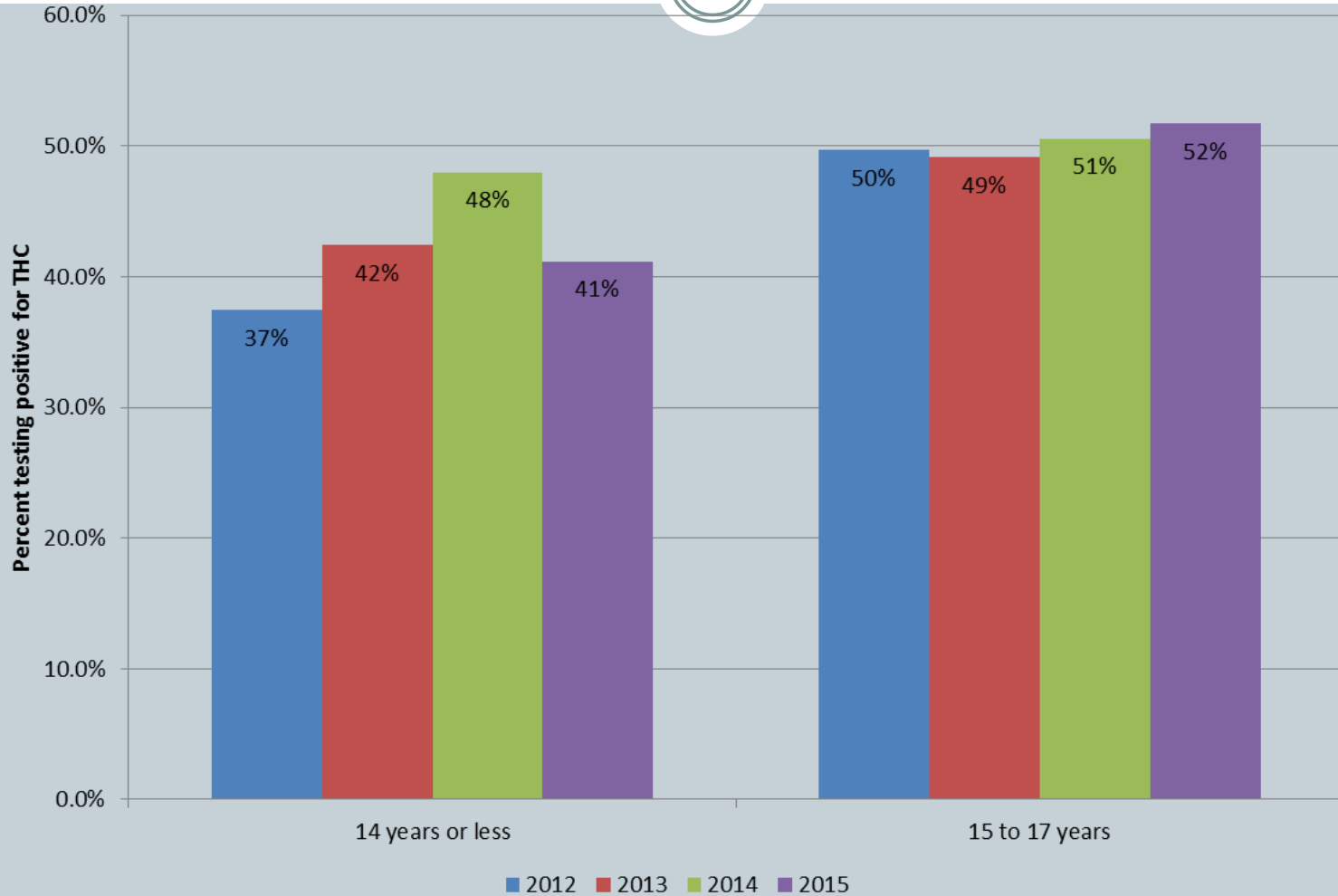
Colorado Dropout Rate



Source: Colorado Department of Education.



Juvenile Probationer THC Test Results



Source: Data provided by Colorado State Judicial Department.



Contact Information



Jack Reed

Colorado Division of Criminal Justice

700 Kipling St., Suite 1000

Lakewood, CO 80215

Jack.Reed@state.co.us

303-239-4330